

# SAFETYNET

Building the European Road Safety Observatory  
Workpackage 1 – Task 3  
Deliverable No 1:

## Annual Statistical Report 2004

based on data from the CARE database



**Authors:**

KUSS Austria  
SWOV The Netherlands  
NTUA Greece  
TRL United Kingdom

**Workpackage Leader:**

NTUA Greece

**Task Leader:**

KUSS Austria

---

Contract Number: TREN-04-FP6TR-S12.395465/506723  
Project Number: 1.3.2.  
Acronym: SAFETYNET  
Version: No1 / 2004  
Date: 28.02.2005

## Content:

Introduction:.....	2
The CARE Database .....	2
Note to the Reader.....	3
Overview – major issues .....	5
EU15 – Developments (includes other database than CARE) .....	5
Interesting Details: .....	6
Time Series - last 10 years .....	8
General time series .....	8
Vehicle / Pedestrian related time series.....	13
Person age and gender related time series.....	18
Annual tables and figures – Fatalities - 2002 .....	23
Pedestrian statistics .....	23
Statistic related to the age of persons .....	27
Group of Vehicles by age of persons .....	28
Age of persons by group of vehicle .....	31
Group of vehicle by collision group.....	35
Various periods of time (month, day of week and hour).....	39
Group of vehicle by type of area.....	42
Fatal accidents.....	43
Weather conditions .....	43
Type of junction .....	44
Type of collision .....	44
Type of area .....	45
GLOSSARY .....	46

## Introduction:

### The CARE Database

#### Community database on Accidents on the Roads in Europe

Road traffic accidents in the Member States of the European Union annually claim about 39.000 lives and leave more than 1.7 million people injured, representing estimated costs of 160 billion euro. Since 1984 a large number of measures to reduce road accidents have been taken at the Community level. Along with these measures, the Council adopted a Decision on 30 November 1993 on the creation of a Community database on road accidents (93/704/EC)<sup>1</sup>, the CARE project.

It was commonly agreed that such a database at the Community level would make it possible to identify and quantify road safety problems, evaluate the efficiency of road safety measures, determine the relevance of Community actions and facilitate the exchange of experience in this field. After a pilot phase of about 3 years, the Council endorsed the "Report from the Commission on the progress with the project and its future prospects" (COM(97) 238 final).

CARE is a Community database on road accidents resulting in death or injury (no statistics on damage - only accidents). The major difference between CARE and most other existing international databases is the high level of disaggregation, i.e. CARE is based on detailed data of individual accidents as collected by the Member States. This structure allows for maximum flexibility and potential with regard to analyzing the information contained in the system and opens up a whole set of new possibilities in the field of accident analysis.

National data sets are integrated into the CARE database in their original national structure and definitions, with confidential data blanked out. However, transformation rules are implemented in the CARE database in order to increase data compatibility and thus enhance the functioning of the system.

The process of improving "homogenization" of accident data within CARE is underway. In the meantime, the inherent incompatibility of national accident data remains a source of possible misinterpretation when performing comparative analyses at international level. Therefore, on-line access to the CARE database is currently restricted to expert users. The summary statistical tables contained here provide an overview of EU road accident data.

---

<sup>1</sup> OJ No 329, 30.12.1993, p. 63.

## Note to the Reader

This Annual Statistical Report provides the basic characteristics of road accidents in the 14 member states of the European Union (except Germany) for the period 1993-2002, on the basis of data collected and processed in the CARE database, the Community Road Accident Database with disaggregate data (Council Decision EEC 93/704 final).

The period 1993-2002 has been used in order to maximize the sample of data. However, data for the following countries and corresponding years were not yet available in the CARE database at the date of drafting this report:

1993-2002:	DE
1999-2002:	IT
2002:	BE, EL

The reader should be aware of the following remarks concerning the contents of this Annual Statistical Report:

- It should be taken into account that analysis and comparisons of the numbers of accidents and injuries are not possible, as different definitions exist in each EU Member State.
- Fatality data are compatible and use common definitions as a result of the CAREPLUS project. Corrective factors have been applied to comply with the international definition of persons killed within 30 days.
- Analysis and comparisons of fatality data should take into account the absence of traffic data.
- EU percentages are weighted percentages.
- Minor differences in totals are due to the rounding of numbers.
- "Unknown" variables are not mentioned but they are taken into account in totals.
- The EU totals for all persons killed are not necessarily the sum of each sub-division of these persons, given that there are no data available for all sub-divisions and all countries. Corresponding percentages refer to the available data.
- Partial or complete reproduction of these statistics is permitted if the source is mentioned and accompanied with the present remarks.
- The basic characteristics of fatal road accidents in the EU member states have been selected as those with usefulness for road accident analysis and availability of compatible form for all or most of the EU countries (results of CAREPLUS project on making accident data comparable). More characteristics will be available with the introduction of the CAREPLUS 2 project. More precisely, the basic characteristics of fatal road accidents refer to:

**person killed class** (driver, passenger, pedestrian)

**person killed age group**

**person killed sex** (male, female)

**area type** (inside or outside urban area)

**motorway** (yes or no)

**junction type** (crossroad, level crossing, not at a junction, roundabout, T or Y junction)

**collision type** (animal, chain or rear, frontal, lateral, parked vehicle, single vehicle accidents with or without obstacle)

**weather conditions** (dry, fog or mist, rain, snow/sleet/hail, strong wind)

**vehicle group** (car or taxi, pedal cycle, moped, motor cycle, bus (>8 seats), heavy goods vehicles, lorry < 3.5 tons, agricultural tractor, other)

**month** (January to December)

**day of the week** (Monday to Sunday)

**hour** (0-24)

- This report is amongst the first outcomes of the CARE database. The validation of the CARE system is not yet finished and minor amendments to the figures presented might be necessary. Comments can be addressed to [safetynet@lboro.ac.at](mailto:safetynet@lboro.ac.at)
- The following country codes are used:

BE	Belgium	IE	Ireland	PT	Portugal
DK	Denmark	IT	Italy	FI	Finland
EL	Greece	LU	Luxembourg	SE	Sweden
ES	Spain	NL	The Netherlands	UK	United Kingdom (GB+NI)
FR	France	AT	Austria		

### Disclaimer

The information in this document is provided as it is and no guarantee or warranty is given that the information is fit for any particular purpose. Therefore, the reader uses the information at their own risk and liability.

### For more information

Traffic Safety Basic Fact Sheets available from the European Commission concern: Cars-Occupants, Pedestrians, Motorcycle and Mopeds, Children and Motorways.

For more information about the project "SafetyNet" which is co-financed by the European Commission, Directorate-General Energy and Transport please contact <http://safetynet.swov.nl/>.

## Overview – major issues

### EU15 – Developments (includes national data for DE)

Figure 1: Annual number of fatalities, injury accidents and injured people (EU-15\*)

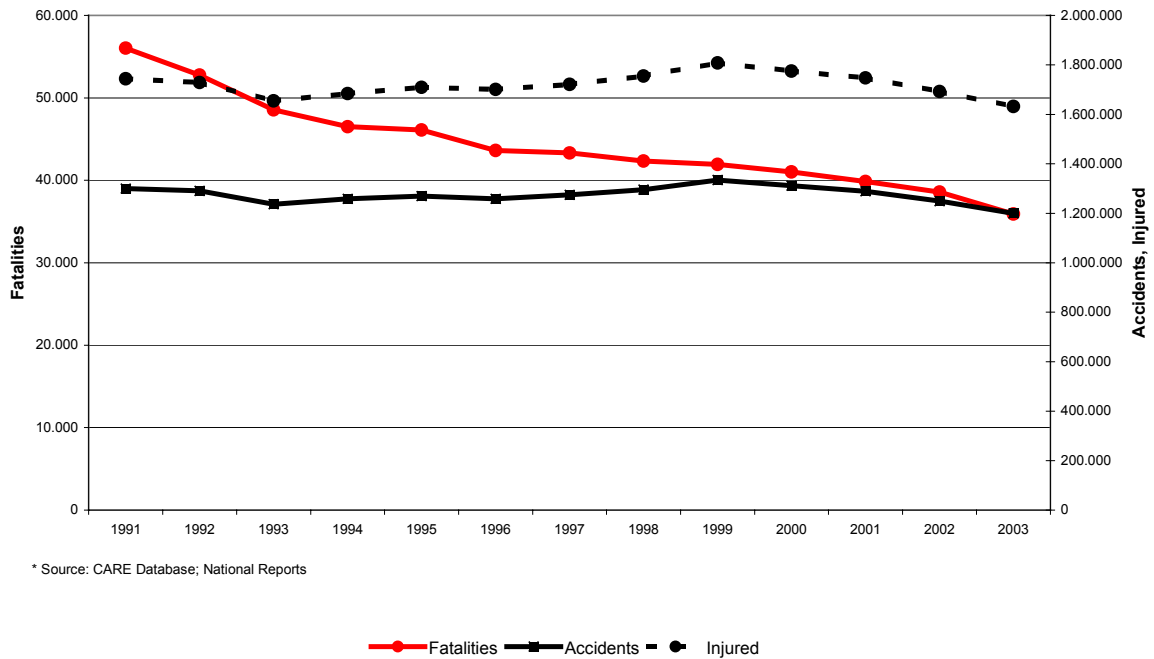
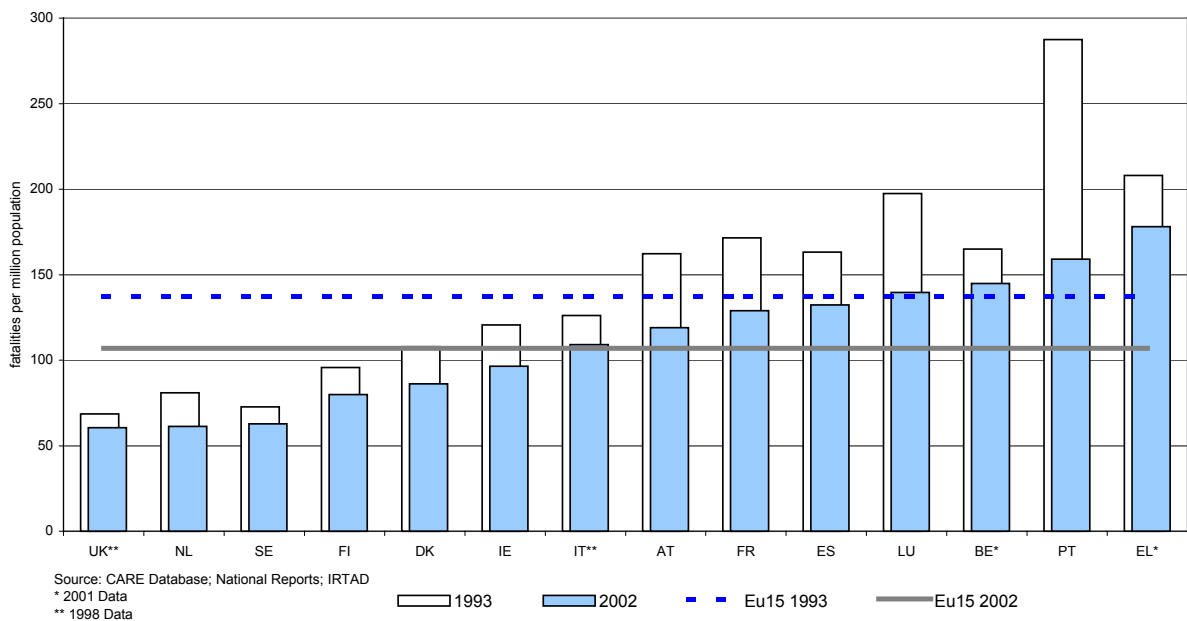


Figure 2: Fatality rate per million population  
Evolution 1993 - 2002



## Interesting Details:

Area type distribution – difference between fatalities and accidents:

Figure 3: Number of fatalities within 30 days, 2002\*

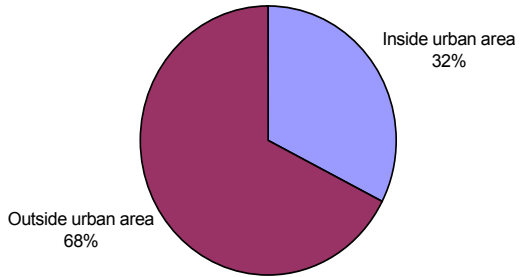
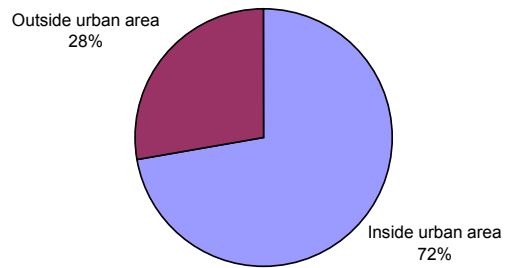


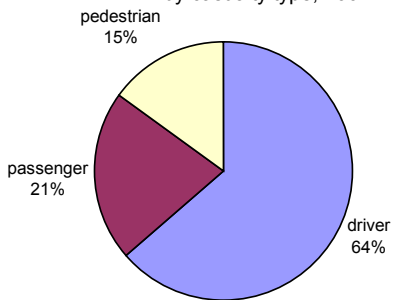
Figure 4: Number of injury accidents, 2002\*



Source: CARE - EU14 2002  
\* or last available data

Person class distribution:

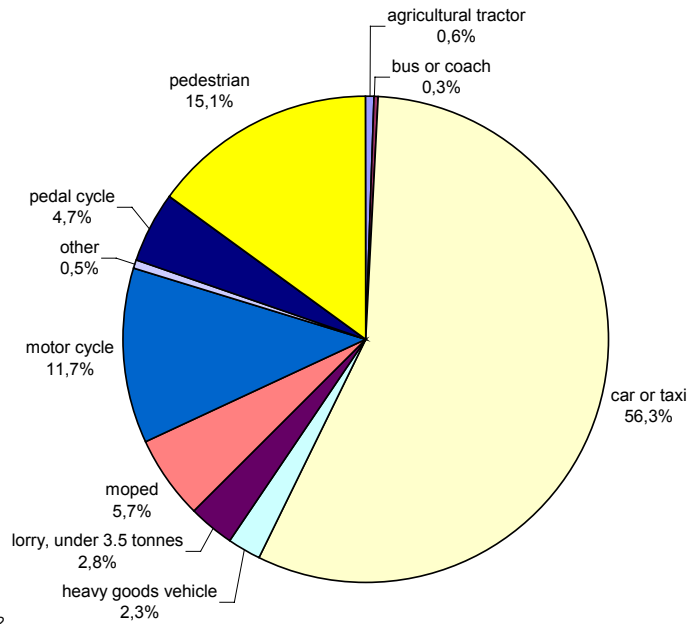
Figure 5: Distribution of fatalities within 30 days by casualty type, 2002\*



Source: CARE - EU14 2002  
\* or last available data

By type of involvement in accidents:

Figure 6: Distribution of fatalities within 30 days by type of vehicle in which they were travelling, 2002\*



Source: CARE - EU14 2002  
\* or last available data



## Time Series - last 10 years

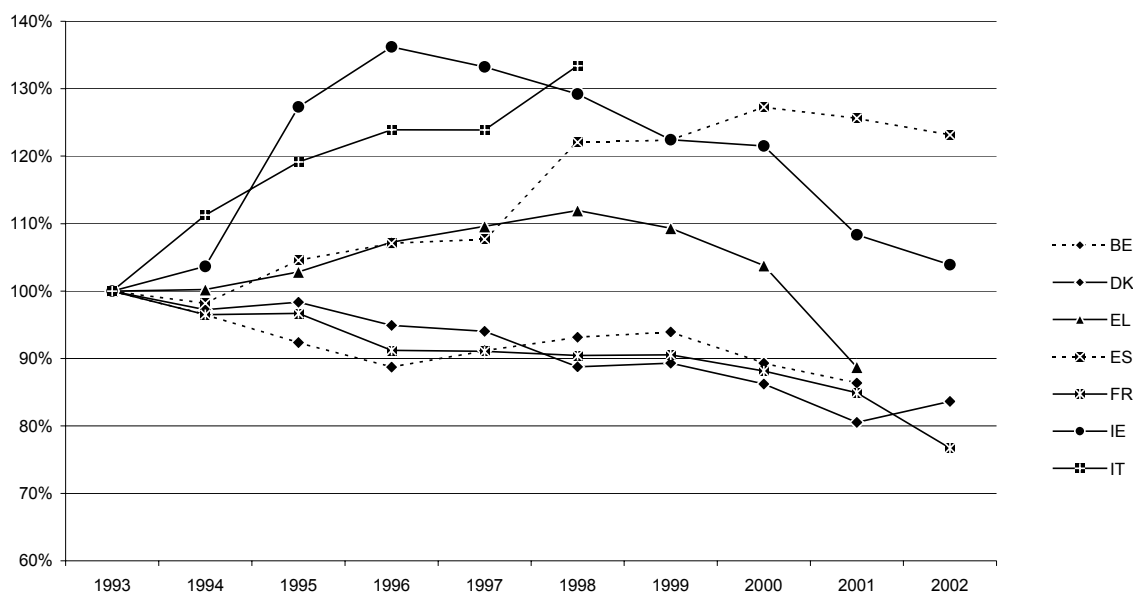
### General time series

**Table: 1** Annual number of injury accidents per country

	1993	1994	1995	1996	1997	1998	1999	2000	2001	2002
BE	54.933	53.018	50.744	48.750	50.078	51.167	51.601	49.065	47.444	-
DK	8.513	8.279	8.373	8.080	8.004	7.556	7.604	7.340	6.856	7.121
EL	22.165	22.222	22.798	23.775	24.295	24.819	24.231	23.001	19.671	-
ES	79.925	78.474	83.586	85.588	86.062	97.570	97.811	101.729	100.393	98.433
FR	137.500	132.726	132.949	125.406	125.202	124.387	124.524	121.223	116.745	105.470
IE	6.376	6.610	8.117	8.686	8.496	8.239	7.806	7.749	6.909	6.625
IT	153.393	170.679	182.761	190.068	190.031	204.615	-	-	-	-
LU	1.184	1.133	1.145	1.050	1.016	1.058	1.076	899	772	769
NL	40.204	41.391	42.641	41.041	41.036	41.299	42.271	37.946	35.313	33.538
AT	41.791	42.015	38.956	38.253	39.695	39.225	42.348	42.126	43.073	43.175
PT	48.645	45.830	48.339	49.265	49.417	49.319	47.966	44.159	42.521	42.219
FI	6.147	6.245	7.812	7.274	6.980	6.902	6.997	6.633	6.451	6.196
SE	14.959	15.888	15.626	15.321	15.752	15.514	15.834	15.770	15.796	16.947
UK	235.492	241.037	237.336	243.286	247.479	246.410	242.609	242.116	236.460	228.534
Total	851.227	865.547	881.183	885.843	893.543	918.080	-	-	-	-
Yearly Change	-	1,7%	1,8%	0,5%	0,9%	2,7%	-	-	-	-

Source: CARE Database / EC  
Date of query: October 2004

Figure 7: Annual number of injury accidents per country



Source: CARE database /

Figure 8: Accidents by country (LU - UK) 1992-2002

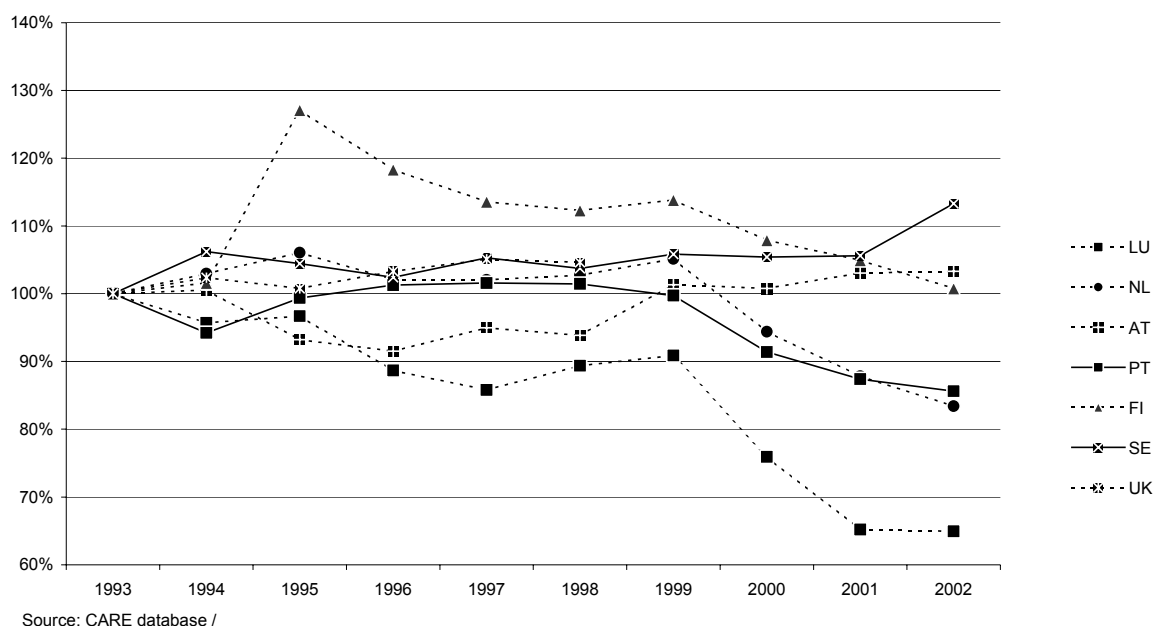


Table 2 Annual number of casualties per country

	1993	1994	1995	1996	1997	1998	1999	2000	2001	2002
BE	77.675	75.030	71.754	68.259	70.907	72.260	72.543	69.431	66.780	-
DK	10.489	10.303	10.573	10.324	10.106	9.674	9.907	9.590	8.891	9.254
EL	31.740	32.206	33.223	34.912	35.569	35.903	34.822	32.800	28.216	-
ES	123.571	119.331	127.183	129.640	130.842	147.334	148.632	155.557	155.116	152.264
FR	198.072	189.365	189.815	178.197	177.567	176.972	175.601	169.760	161.665	145.081
IE	10.264	10.635	13.116	13.948	13.771	13.413	12.924	12.642	10.817	9.754
IT	222.779	245.762	266.083	278.308	277.193	299.699	-	-	-	-
LU	1.720	1.640	1.730	1.609	1.558	1.575	1.588	1.331	1.246	1.162
NL	48.963	50.513	52.045	50.163	50.279	50.609	52.187	47.166	43.803	41.669
AT*	55.270	55.156	51.974	50.700	52.696	52.040	56.046	55.905	57.223	57.640
PT	68.787	64.089	67.912	68.727	68.455	68.468	67.077	61.553	58.510	58.054
FI	8.290	8.560	10.632	9.703	9.395	9.497	9.483	8.904	8.844	8.571
SE	20.373	21.672	21.745	21.347	21.821	21.887	22.544	22.623	22.913	25.307
UK	313.278	323.682	318.647	329.413	336.758	335.033	330.195	331.423	322.793	310.938
Total	1.191.271	1.207.944	1.236.432	1.245.250	1.256.917	1.294.364	-	-	-	-
Yearly Change	-	1,4%	2,4%	0,7%	0,9%	3,0%	-	-	-	-

Source: CARE Database / EC  
 Date of query: October 2004  
 \* Data from national database

**Table: 3** Annual number of fatal accidents per country

	1993	1994	1995	1996	1997	1998	1999	2000	2001	2002
BE	1.517	1.564	1.337	1.237	1.255	1.345	1.299	1.356	1.378	-
DK	522	513	539	448	461	461	467	453	385	415
EL	1.634	1.671	1.798	1.870	1.837	1.921	1.876	1.803	1.669	-
ES	4.725	4.139	4.193	4.042	4.062	4.319	4.239	4.372	4.170	4.031
FR	8.005	7.609	7.453	7.178	7.130	7.514	7.185	6.811	6.920	6.549
IE	394	371	405	415	424	408	373	362	360	346
IT	5.913	5.924	5.819	5.590	5.606	5.304	-	-	-	-
LU	72	63	65	67	57	56	53	68	65	52
NL	1.134	1.191	1.227	1.099	1.076	988	1.028	1.006	932	913
AT	1.179	1.195	1.084	933	1.005	865	947	889	861	873
PT	1.870	1.724	1.856	1.880	1.732	1.647	1.582	1.450	1.316	1.323
FI	434	423	411	355	391	367	391	354	386	367
SE	573	528	519	488	493	490	516	535	511	490
UK	3.607	3.462	3.412	3.404	3.434	3.276	3.267	3.257	3.313	3.260
<b>Total</b>	<b>31.579</b>	<b>30.377</b>	<b>30.118</b>	<b>29.006</b>	<b>28.963</b>	<b>28.961</b>	-	-	-	-
<b>Yearly Change</b>	-	-3,8%	-0,9%	-3,7%	-0,1%	0,0%	-	-	-	-

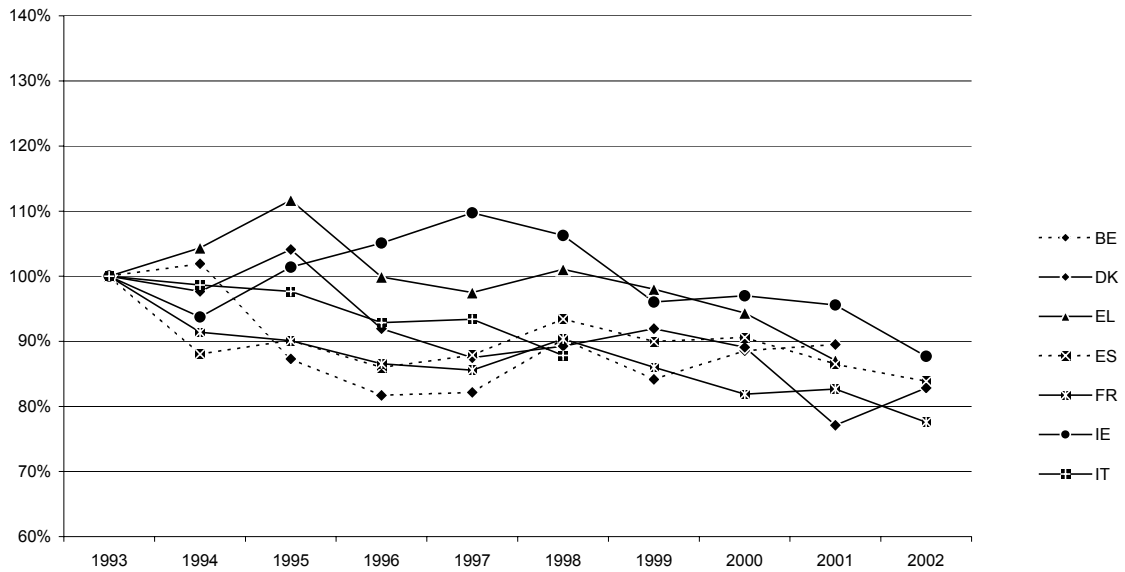
Source: CARE Database / EC  
Date of query: October 2004

**Table: 4** Annual number of fatalities per country

	1993	1994	1995	1996	1997	1998	1999	2000	2001	2002
BE	1.660	1.692	1.449	1.356	1.364	1.500	1.397	1.470	1.486	-
DK	559	546	582	514	489	499	514	498	431	463
EL	2.159	2.253	2.411	2.157	2.105	2.182	2.116	2.037	1.880	-
ES	6.376	5.614	5.749	5.482	5.604	5.957	5.738	5.777	5.516	5.347
FR	9.867	9.019	8.891	8.541	8.444	8.918	8.487	8.079	8.160	7.655
IE	431	404	437	453	473	458	414	418	412	378
IT	7.188	7.091	7.020	6.676	6.713	6.314	-	-	-	-
LU	78	65	70	71	60	57	58	76	70	62
NL	1.235	1.298	1.334	1.180	1.163	1.066	1.090	1.082	993	987
AT	1.283	1.338	1.210	1.027	1.105	963	1.079	976	958	956
PT	2.700	2.504	2.711	2.730	2.521	2.126	1.995	1.857	1.671	1.675
FI	484	480	441	404	438	400	431	396	433	415
SE	632	589	572	537	541	531	580	591	583	560
UK	3.814	3.807	3.765	3.740	3.743	3.581	3.564	3.580	3.598	3.581
<b>Total</b>	<b>38.466</b>	<b>36.700</b>	<b>36.642</b>	<b>34.868</b>	<b>34.763</b>	<b>34.552</b>	-	-	-	-
<b>Yearly Change</b>	-	-4,6%	-0,2%	-4,8%	-0,3%	-0,6%	-	-	-	-

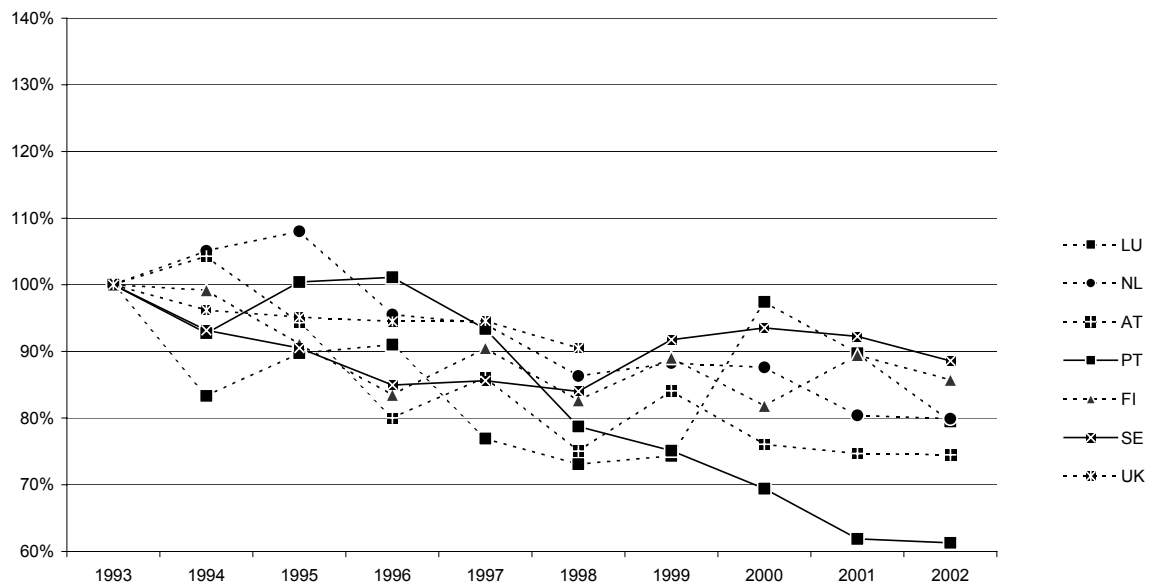
Source: CARE Database / EC  
Date of query: October 2004

Figure 9: Annual number of fatalities per country (BE - IT)



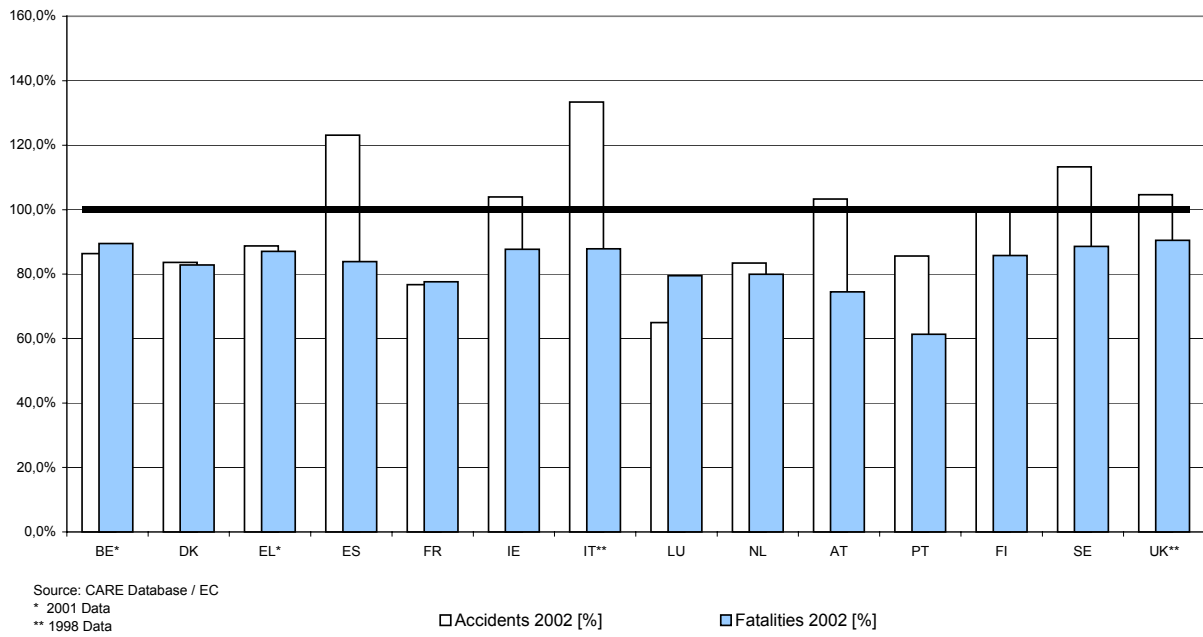
Source: CARE database / EC

Figure 10: Annual number of fatalities per country (LU - UK)



Source: CARE database / EC

Figure 11: Number of fatalities and injury accidents per country in 2002\*  
as proportion of the number in 1993



## Vehicle / Pedestrian related time series

### Pedestrians and occupants of pedal cycles, mopeds and motorcycles

**Table: 5** Annual number of pedestrian fatalities per country

	1993	1994	1995	1996	1997	1998	1999	2000	2001	2002
BE	199	197	149	154	142	162	154	142	158	-
DK	133	93	118	68	87	73	82	99	49	63
EL	498	479	481	422	409	417	399	375	338	-
ES	1.103	1.007	1.000	960	967	996	906	899	846	776
FR	1.233	1.190	1.086	1.043	982	1.044	932	838	822	866
IE	136	121	113	115	130	114	92	85	89	86
IT	1.020	1.022	945	985	893	844	-	-	-	-
LU	18	7	8	9	8	3	2	11	11	6
NL	143	124	142	109	119	110	111	106	106	97
AT	202	225	200	157	156	165	182	140	117	160
PT	699	564	598	624	549	406	393	384	337	339
FI	86	87	72	70	69	62	67	62	62	40
SE	94	86	71	74	72	69	86	73	87	58
UK	1.283	1.169	1.085	1.039	1.010	946	909	889	858	808
Total	6.847	6.372	6.068	5.830	5.592	5.411	-	-	-	-
Yearly Change	-	-6,9%	-4,8%	-3,9%	-4,1%	-3,2%	-	-	-	-
Total - all users	38.609	36.700	36.642	34.868	34.763	34.552	-	-	-	-
% pedestrians	17,7%	17,4%	16,6%	16,7%	16,1%	15,7%	-	-	-	-

Source: CARE Database / EC  
Date of query: October 2004

**Table: 6** Annual number of pedal cyclist fatalities per country (includes all riders and passengers of pedal cycle)

	1993	1994	1995	1996	1997	1998	1999	2000	2001	2002
BE	137	151	128	121	122	135	122	134	130	-
DK	69	77	77	88	65	58	59	58	56	52
EL	38	28	34	28	32	34	23	22	29	-
ES	145	152	123	101	116	114	119	84	100	96
FR	360	342	398	321	352	321	331	271	259	225
IE	24	26	28	24	26	21	14	10	12	19
IT	444	437	391	413	428	364	-	-	-	-
LU	1	1	3	1	1	1	-	1	1	1
NL	242	269	267	233	242	194	194	198	195	169
AT	102	75	77	73	66	57	68	62	55	80
PT	100	69	96	75	75	74	41	56	50	57
FI	67	63	74	46	61	54	63	53	59	53
SE	70	52	57	49	42	58	45	47	43	42
UK	196	182	221	210	190	167	178	134	140	137
Total	1.995	1.925	1.975	1.784	1.818	1.653	-	-	-	-
Yearly Change	-	-3,5%	2,6%	-9,7%	1,9%	-9,1%	-	-	-	-
Total - all users	38.609	36.700	36.642	34.868	34.763	34.552	-	-	-	-
% cyclists	5,2%	5,2%	5,4%	5,1%	5,2%	4,8%	-	-	-	-

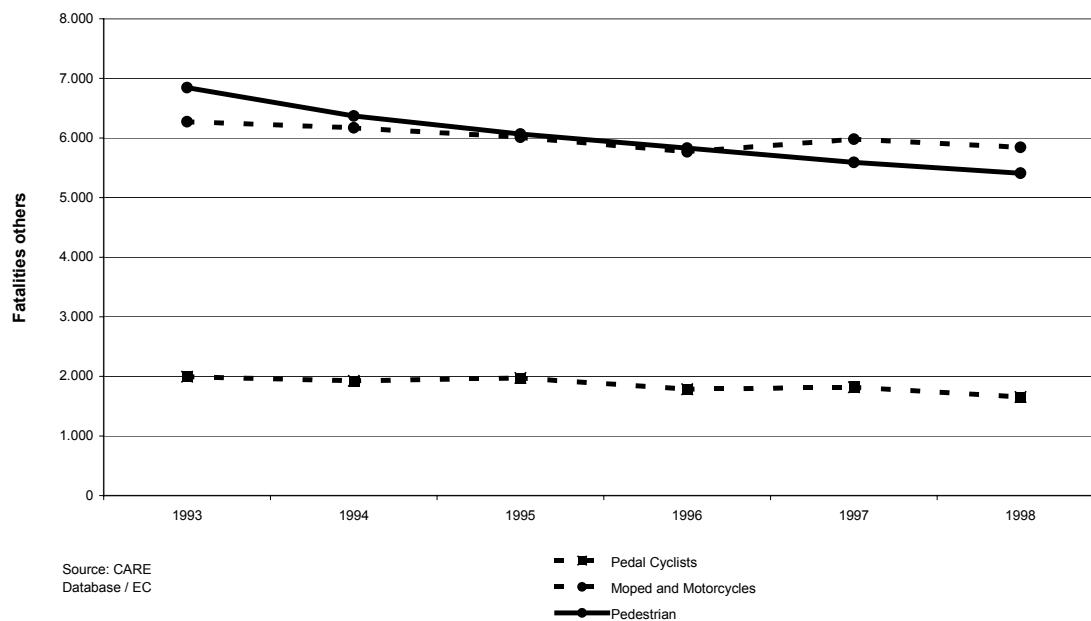
Source: CARE Database / EC  
Date of query: October 2004

**Table: 7** Annual number of moped&motorcycle rider&passenger fatalities per country

	1993	1994	1995	1996	1997	1998	1999	2000	2001	2002
BE	234	234	187	174	193	199	198	184	210	-
DK	61	76	63	49	46	59	67	71	55	62
EL	531	572	628	541	506	569	561	496	503	-
ES	948	860	865	844	899	928	902	866	831	784
FR	1.503	1.388	1.342	1.310	1.417	1.428	1.476	1.420	1.543	1.450
IE	53	55	57	58	68	37	43	40	50	44
IT	1.327	1.329	1.187	1.192	1.221	1.191	-	-	-	-
LU	2	5	4	6	3	7	5	8	6	0
NL	196	210	208	198	180	165	182	196	154	191
AT	173	159	152	131	169	120	151	156	144	135
PT	724	758	793	733	680	554	494	425	399	360
FI	26	32	33	33	24	25	21	19	23	29
SE	54	41	41	54	49	52	48	49	47	49
UK	444	454	454	447	525	509	556	612	594	628
<b>Total</b>	<b>6.276</b>	<b>6.173</b>	<b>6.014</b>	<b>5.770</b>	<b>5.981</b>	<b>5.843</b>	-	-	-	-
<b>Yearly Change</b>	-	-1,6%	-2,6%	-4,1%	3,7%	-2,3%	-	-	-	-
<b>Total - all users</b>	<b>38.609</b>	<b>36.700</b>	<b>36.642</b>	<b>34.868</b>	<b>34.763</b>	<b>34.552</b>	-	-	-	-
<b>% moped or motorcycles</b>	<b>16,3%</b>	<b>16,8%</b>	<b>16,4%</b>	<b>16,5%</b>	<b>17,2%</b>	<b>16,9%</b>	-	-	-	-

Source: CARE Database / EC  
Date of query: October 2004

Figure 12: Annual number of fatalities by type of vehicle in which they were travelling, EU-14



## Fatalities involved in accident with car or taxi, heavy goods vehicles or lorries < 3,5t and buses

**Table: 8** Annual number of fatalities per country in accidents involving cars or taxis  
(Attention: fatalities in cars or taxis plus all opponents)

	1993	1994	1995	1996	1997	1998	1999	2000	2001	2002
BE	1.417	1.415	1.242	1.134	1.127	1.244	1.134	1.219	1.223	-
DK	406	410	443	393	363	384	386	360	334	342
EL	1.274	1.404	1.481	1.367	1.365	1.424	1.387	1.376	1.248	1.632
ES	5.053	4.367	4.508	4.250	4.311	4.641	4.463	4.533	4.333	4.260
FR	8.364	7.650	7.526	7.306	7.144	7.617	7.254	6.938	6.915	6.475
IE	312	297	294	453	473	457	414	407	318	367
IT	5.963	5.816	5.840	5.519	5.562	5.218	-	-	-	-
LU	70	59	57	61	53	49	53	67	63	58
NL	954	924	1.004	865	858	803	770	764	707	721
AT	1.024	1.088	978	852	882	766	855	724	731	749
PT	1.778	1.622	1.794	1.829	1.785	1.570	1.344	1.223	1.043	1.102
FI	484	478	428	389	360	317	324	302	331	320
SE	533	493	475	425	444	424	481	480	467	463
UK	3.138	3.113	3.067	3.068	3.105	2.930	2.902	2.865	2.869	2.899
<b>Total</b>	<b>30.770</b>	<b>29.136</b>	<b>29.137</b>	<b>27.911</b>	<b>27.832</b>	<b>27.844</b>	-	-	-	-
<b>Yearly Change</b>	-	-5,3%	0,0%	-4,2%	-0,3%	0,0%	-	-	-	-
<b>Total - all users</b>	<b>38.609</b>	<b>36.700</b>	<b>36.642</b>	<b>34.868</b>	<b>34.763</b>	<b>34.552</b>	-	-	-	-
<b>% car or taxi</b>	<b>79,7%</b>	<b>79,4%</b>	<b>79,5%</b>	<b>80,0%</b>	<b>80,1%</b>	<b>80,6%</b>	-	-	-	-

Source: CARE Database / EC  
Date of query: October 2004



**Table: 9** Annual number of fatalities per country in accidents involving heavy goods vehicles or lorries <3,5t  
(Attention: fatalities in heavy goods vehicles or lorries <3,5t plus all opponents)

	1993	1994	1995	1996	1997	1998	1999	2000	2001	2002
BE	288	309	280	268	263	306	301	315	297	-
DK	207	173	185	178	170	156	168	161	139	144
EL	651	627	763	655	557	558	538	508	458	-
ES	1.656	1.518	1.649	1.479	1.611	1.660	1.566	1.558	1.504	1.500
FR	1.894	1.757	1.718	1.546	1.489	1.590	1.504	1.340	1.387	1.312
IE	129	100	127	111	136	123	98	115	117	85
IT <sup>2</sup>	1.331	1.400	1.483	1.402	1.384	1.277	-	-	-	-
LU <sup>2</sup>	8	10	8	8	6	7	3	5	6	12
NL	291	376	354	335	307	248	310	288	287	242
AT	221	262	238	180	199	191	223	193	173	196
PT	846	790	809	876	662	393	684	606	562	539
FI	137	157	120	127	161	114	156	115	142	137
SE	130	127	129	133	132	143	119	153	147	163
UK	1.039	938	930	870	815	848	919	887	907	848
Total	8.828	8.544	8.793	8.168	7.892	7.614	-	-	-	-
Yearly Change	-	-3,2%	2,9%	-7,1%	-3,4%	-3,5%	-	-	-	-
Total - all users	38.609	36.700	36.642	34.868	34.763	34.552	-	-	-	-
% HGV or lorries < 3,5t	22,9%	23,3%	24,0%	23,4%	22,7%	22,0%	-	-	-	-

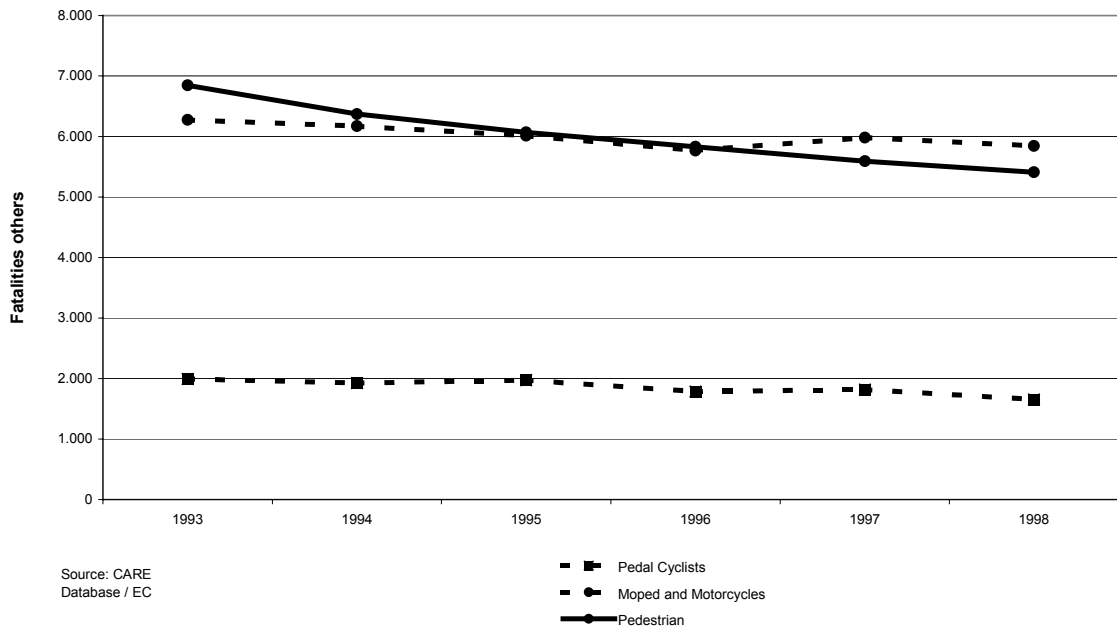
Source: CARE Database / EC  
Date of query: October 2004  
<sup>2</sup>data involving only heavy goods vehicles

**Table: 10** Annual number of fatalities per country in accidents involving buses  
(Attention: fatalities in buses plus all opponents)

	1993	1994	1995	1996	1997	1998	1999	2000	2001	2002
BE	40	24	20	37	37	47	23	28	29	-
DK	26	19	22	24	15	11	25	14	14	22
EL	97	94	81	66	79	93	79	71	59	-
ES	171	174	153	154	180	184	163	144	135	109
FR	152	154	166	112	189	127	127	144	117	109
IE	12	14	14	15	11	16	14	12	9	8
IT	148	130	147	121	137	105	-	-	-	-
LU	1	0	4	5	3	0	0	4	6	4
NL	30	21	20	23	29	29	21	23	27	21
AT	30	31	46	18	25	14	41	36	33	17
PT	111	111	91	86	104	145	59	57	66	50
FI	28	20	26	12	20	22	18	18	28	17
SE	25	22	28	35	15	16	23	16	32	29
UK	230	192	220	184	174	198	192	194	221	173
Total	1.101	1.006	1.038	892	1.018	1.007	-	-	-	-
Yearly Change	-	-8,6%	3,2%	-14,1%	14,1%	-1,1%	-	-	-	-
Total - all users	38.609	36.700	36.642	34.868	34.763	34.552	-	-	-	-
% buses	2,9%	2,7%	2,8%	2,6%	2,9%	2,9%	-	-	-	-

Source: CARE Database / EC  
Date of query: October 2004

Figure 12: Annual number of fatalities by type of vehicle in which they were travelling, EU-14



## Person age and gender related time series

**Table: 11 a** Annual number of fatalities per country, by age band: 1993-1997

	1993				1994				1995			
	0 to 15	16 to 24	25 to 64	>64	0 to 15	16 to 24	25 to 64	>64	0 to 15	16 to 24	25 to 64	>64
BE	72	409	892	277	76	429	887	290	93	327	778	237
DK	40	106	243	170	27	124	250	145	35	147	241	159
EL	84	504	1.150	410	101	523	1.216	409	84	529	1.333	455
ES	320	1.594	3.461	853	292	1.356	3.044	796	269	1.316	3.175	844
FR	510	2.597	5.139	1.610	505	2.251	4.634	1.617	498	2.173	4.688	1.521
IE	42	119	176	72	33	108	177	68	31	128	177	67
IT	270	1.688	3.351	1.390	284	1.552	3.358	1.600	247	1.574	3.406	1.497
LU	6	17	39	12	2	10	47	4	1	19	38	8
NL	96	290	537	312	104	282	623	289	100	282	643	309
AT	62	354	621	245	65	368	673	232	64	303	630	213
PT	169	640	1.322	515	172	635	1.227	437	163	701	1.384	431
FI	37	90	239	118	44	91	229	116	39	71	212	119
SE	33	111	297	191	39	89	263	198	35	94	266	175
UK	323	871	1.756	992	323	895	1.686	872	289	887	1.678	890
<b>Total</b>	<b>2.064</b>	<b>9.390</b>	<b>19.223</b>	<b>7.167</b>	<b>2.067</b>	<b>8.713</b>	<b>18.314</b>	<b>7.073</b>	<b>1.948</b>	<b>8.551</b>	<b>18.649</b>	<b>6.925</b>
<b>% by age group</b>	<b>5,5%</b>	<b>24,8%</b>	<b>50,8%</b>	<b>18,9%</b>	<b>5,7%</b>	<b>24,1%</b>	<b>50,6%</b>	<b>19,6%</b>	<b>5,4%</b>	<b>23,7%</b>	<b>51,7%</b>	<b>19,2%</b>

	1996				1997			
	0 to 15	16 to 24	25 to 64	>64	0 to 15	16 to 24	25 to 64	>64
BE	63	305	712	267	61	295	761	237
DK	45	114	226	129	28	113	216	132
EL	85	486	1.127	437	84	466	1.127	406
ES	236	1.204	3.068	855	223	1.239	3.108	900
FR	469	1.995	4.488	1.578	493	2.087	4.360	1.493
IE	31	124	197	61	34	127	202	66
IT	240	1.429	3.278	1.434	217	1.300	3.382	1.548
LU	2	15	46	3	3	17	28	9
NL	86	271	550	273	79	246	572	266
AT	57	261	513	195	43	298	552	212
PT	139	634	1.448	485	139	580	1.331	441
FI	40	87	175	102	36	72	207	123
SE	29	89	238	181	32	73	265	171
UK	285	890	1.760	781	268	903	1.784	788
<b>Total</b>	<b>1.807</b>	<b>7.904</b>	<b>17.826</b>	<b>6.781</b>	<b>1.740</b>	<b>7.816</b>	<b>17.895</b>	<b>6.792</b>
<b>% by age group</b>	<b>5,3%</b>	<b>23,0%</b>	<b>51,9%</b>	<b>19,8%</b>	<b>5,1%</b>	<b>22,8%</b>	<b>52,3%</b>	<b>19,8%</b>

Source: CARE Database / EC  
Date of query: October 2004

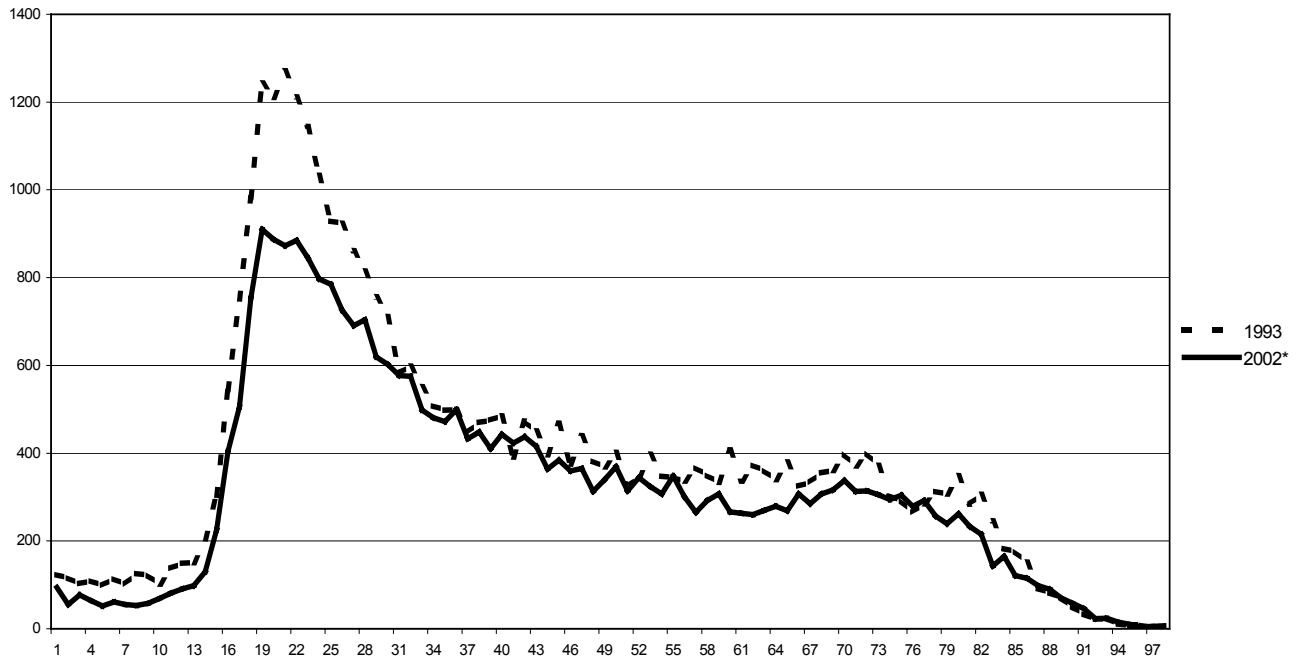
**Table: 11 b** Annual number of fatalities per country, by age band: 1998-2002

	1998				1999				2000			
	0 to 15	16 to 24	25 to 64	>64	0 to 15	16 to 24	25 to 64	>64	0 to 15	16 to 24	25 to 64	>64
BE	99	334	795	260	72	319	769	233	67	368	784	238
DK	22	99	255	123	43	111	243	117	31	109	224	134
EL	74	466	1.167	445	66	475	1.132	415	54	421	1.107	428
ES	260	1.364	3.335	889	258	1.255	3.186	909	228	1.252	3.270	849
FR	455	2.196	4.671	1.588	421	2.173	4.397	1.442	414	1.933	4.221	1.369
IE	40	138	189	80	26	114	188	71	24	138	195	44
IT	189	1.231	3.217	1.379	-	-	-	-	-	-	-	-
LU	2	8	39	7	2	12	37	7	3	17	45	10
NL	56	254	529	227	82	247	519	242	66	271	510	235
AT	48	205	502	208	51	254	549	225	35	233	518	190
PT	145	497	1.101	378	96	455	1.085	342	89	396	1.013	341
FI	24	72	200	104	33	72	230	96	23	64	203	106
SE	33	84	266	148	44	82	281	173	24	113	300	154
UK	224	787	1.797	771	239	783	1.765	758	204	782	1.908	679
Total	1.671	7.735	18.063	6.607	-	-	-	-	-	-	-	-
% by age group	4,9%	22,7%	53,0%	19,4%	-	-	-	-	-	-	-	-

	2001				2002			
	0 to 15	16 to 24	25 to 64	>64	0 to 15	16 to 24	25 to 64	>64
BE	71	319	824	264	-	-	-	-
DK	29	83	217	102	16	100	244	103
EL	56	427	981	385	-	-	-	-
ES	208	1.123	3.164	867	189	1.070	3.107	834
FR	347	2.058	4.275	1.394	288	1.855	4.061	1.361
IE	33	126	197	47	23	93	180	60
IT	-	-	-	-	-	-	-	-
LU	6	18	39	7	3	13	41	5
NL	61	205	505	222	55	249	469	213
AT	34	212	526	186	33	207	505	211
PT	65	373	870	321	73	334	943	301
FI	24	99	214	96	20	86	210	99
SE	25	115	296	147	27	111	283	139
UK	280	1.017	1.826	652	234	1.086	1.816	655
Total	-	-	-	-	-	-	-	-
% by age group	-	-	-	-	-	-	-	-

Source: CARE Database / EC  
Date of query: October 2004

Figure 11: Annual number of fatalities by year of age band, EU-14: 1993 and 2002\*



Source: CARE Database / EC  
\* or last available data

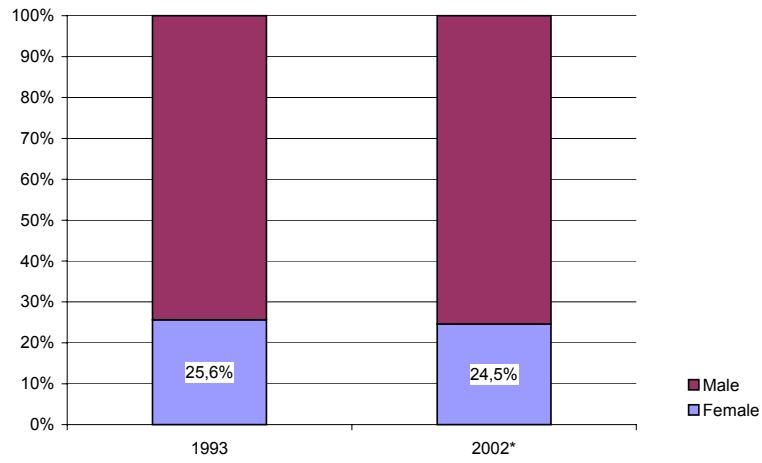
**Table: 12** Annual number of fatalities per country, by gender, 2002

	1993		1994		1995		1996		1997	
	female	male	female	male	female	male	female	male	female	male
BE	423	1.237	422	1.270	354	1.094	336	1.020	345	1.018
DK	158	398	160	386	199	383	144	370	122	367
EL	468	1.682	514	1.738	526	1.874	508	1.639	449	1.647
ES	1.558	4.768	1.346	4.221	1.437	4.253	1.335	4.079	1.345	4.178
FR	2.689	7.169	2.536	6.484	2.471	6.420	2.380	6.160	2.245	6.199
IE	110	317	104	295	117	318	108	342	131	335
IT	1.623	5.540	1.723	5.368	1.672	5.348	1.628	5.048	1.567	5.145
LU	25	53	12	53	19	51	15	56	19	41
NL	336	899	370	928	383	951	342	838	336	827
AT	335	948	331	1.007	309	901	289	738	288	817
PT	612	2.088	541	1.963	563	2.148	568	2.152	508	2.011
FI	147	337	150	330	113	328	126	278	150	288
SE	193	439	180	408	167	403	161	376	136	404
UK	1.197	2.760	1.147	2.655	1.122	2.643	1.030	2.710	1.030	2.713
<b>Total</b>	<b>9.874</b>	<b>28.635</b>	<b>9.536</b>	<b>27.106</b>	<b>9.452</b>	<b>27.115</b>	<b>8.970</b>	<b>25.806</b>	<b>8.671</b>	<b>25.990</b>
<b>% by sex</b>	<b>25,6%</b>	<b>74,4%</b>	<b>26,0%</b>	<b>74,0%</b>	<b>25,8%</b>	<b>74,2%</b>	<b>25,8%</b>	<b>74,2%</b>	<b>25,0%</b>	<b>75,0%</b>

	1998		1999		2000		2001		2002	
	female	male	female	male	female	male	female	male	female	male
BE	419	1.080	376	1.021	367	1.102	384	1.102	-	-
DK	142	357	142	372	151	347	117	314	119	344
EL	477	1.688	453	1.653	440	1.590	416	1.458	-	-
ES	1.478	4.421	1.409	4.263	1.338	4.323	1.325	4.123	1.263	4.008
FR	2.477	6.441	2.329	6.158	1.951	6.127	2.057	6.103	1.869	5.786
IE	115	339	118	287	104	302	103	304	101	260
IT	1.481	4.833	-	-	-	-	-	-	-	-
LU	8	49	16	42	17	59	17	52	12	50
NL	294	768	282	802	294	784	246	743	246	734
AT	269	694	320	759	246	730	251	707	276	680
PT	392	1.734	397	1.626	351	1.516	363	1.306	342	1.312
FI	111	289	131	300	133	263	137	296	114	301
SE	121	410	158	422	153	438	149	433	137	423
UK	1.026	2.555	958	2.604	914	2.666	864	2.728	915	2.662
<b>Total</b>	<b>8.810</b>	<b>25.658</b>	<b>-</b>	<b>-</b>	<b>-</b>	<b>-</b>	<b>-</b>	<b>-</b>	<b>-</b>	<b>-</b>
<b>% by sex</b>	<b>25,6%</b>	<b>74,4%</b>	<b>-</b>	<b>-</b>	<b>-</b>	<b>-</b>	<b>-</b>	<b>-</b>	<b>-</b>	<b>-</b>

Source: CARE Database / EC  
Date of query: October 2004

Figure 12: Annual distribution of fatalities by gender, EU-14, 1993 and 2002\*



Source: CARE database EU14  
 \* or last available data

## Annual tables and figures – Fatalities - 2002

### Pedestrian statistics

**Table: 13** Annual number of pedestrian fatalities by hour of day per country, 2002

	0	1	2	3	4	5	6	7	8	9	10	11	12
BE*	3	3	2	2	3	2	4	7	6	5	14	4	3
DK	2	4	4	2	3	3	1	0	0	0	2	5	3
EL*	10	5	6	4	4	9	12	18	16	9	16	17	14
ES	26	21	15	10	12	19	29	22	26	26	35	33	34
FR	16	17	12	18	20	23	27	31	41	38	31	33	22
IE	6	7	5	8	3	0	0	2	2	2	4	5	4
IT**	12	20	10	11	6	5	10	28	31	40	36	29	33
LU	0	0	0	0	1	0	0	0	1	0	0	0	0
NL	2	2	3	2	4	2	1	4	5	1	1	4	2
AT	1	4	4	5	2	5	11	8	3	11	9	3	2
PT	9	1	2	6	1	7	8	14	9	9	9	13	6
FI	3	1	1	1	1	0	0	2	2	1	2	4	2
SE	0	1	4	1	0	0	0	3	0	3	2	3	4
UK	25	25	19	8	9	7	7	14	18	27	31	36	39
<b>Total</b>	<b>115</b>	<b>111</b>	<b>87</b>	<b>78</b>	<b>69</b>	<b>82</b>	<b>110</b>	<b>153</b>	<b>160</b>	<b>172</b>	<b>192</b>	<b>189</b>	<b>168</b>
<b>% by hour</b>	<b>2,5%</b>	<b>2,4%</b>	<b>1,9%</b>	<b>1,7%</b>	<b>1,5%</b>	<b>1,8%</b>	<b>2,4%</b>	<b>3,3%</b>	<b>3,4%</b>	<b>3,7%</b>	<b>4,1%</b>	<b>4,1%</b>	<b>3,6%</b>

	13	14	15	16	17	18	19	20	21	22	23	Total
BE*	3	6	5	12	11	26	17	8	6	2	4	158
DK	4	6	1	1	8	1	3	2	1	4	3	63
EL*	7	11	15	12	19	23	23	27	26	25	10	338
ES	31	28	23	25	24	44	88	62	51	49	45	778
FR	19	41	41	56	88	88	69	59	23	33	20	866
IE	0	3	5	3	6	2	4	7	3	4	1	86
IT**	26	26	36	42	57	105	82	67	49	34	33	860
LU	1	0	2	0	0	0	1	0	0	0	0	6
NL	5	6	15	8	11	6	5	1	3	1	3	97
AT	6	6	4	9	22	12	16	4	7	3	3	160
PT	11	15	11	9	19	23	49	27	30	26	18	332
FI	0	1	3	4	3	0	4	2	3	0	0	40
SE	3	1	4	6	5	7	5	3	1	1	1	58
UK	38	29	43	66	59	66	60	39	51	37	55	808
<b>Total</b>	<b>154</b>	<b>179</b>	<b>208</b>	<b>253</b>	<b>332</b>	<b>403</b>	<b>426</b>	<b>308</b>	<b>254</b>	<b>219</b>	<b>196</b>	<b>4.650</b>
<b>% by hour</b>	<b>3,3%</b>	<b>3,8%</b>	<b>4,5%</b>	<b>5,4%</b>	<b>7,1%</b>	<b>8,7%</b>	<b>9,2%</b>	<b>6,6%</b>	<b>5,5%</b>	<b>4,7%</b>	<b>4,2%</b>	<b>100,0%</b>

Source: CARE Database / EC

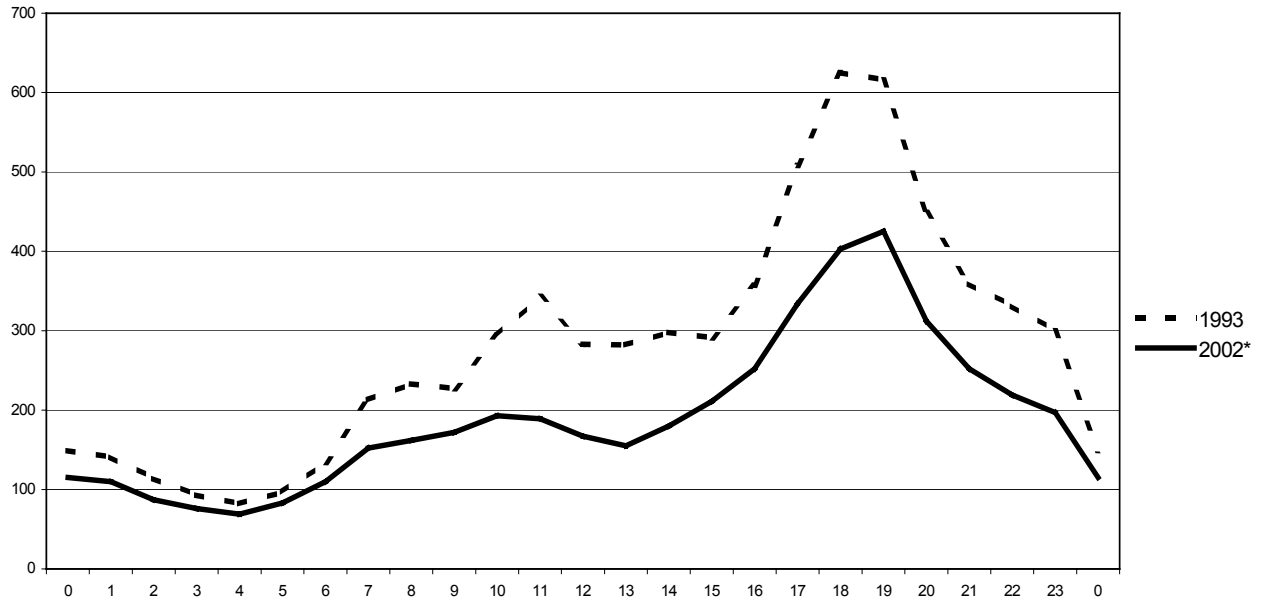
Date of query: October 2004

\* Data 2001

\*\* Data 1998



Figure 13: Number of pedestrian fatalities by hour of day, EU 14: 1993 and 2002\*



Source: CARE Database / EC  
\* or last available year

**Table: 14** Number of pedestrian fatalities per country, by road and area type, 2002

	Motorway	Not on motorways		Total
		Outside urban area	Inside urban area	
BE*	7	43	108	158
DK	2	25	36	63
EL*	14	74	250	338
ES	21	413	343	777
FR	66	260	540	866
IE	1	41	44	86
IT**	13	164	667	844
LU	0	1	5	6
NL	7	24	66	97
AT	8	47	105	160
PT	10	103	220	333
FI	4	10	26	40
SE	4	21	33	58
UK	23	199	585	808
<b>Total</b>	<b>180</b>	<b>1.425</b>	<b>3.028</b>	<b>4.634</b>
<b>% by road type</b>	<b>3,9%</b>	<b>30,8%</b>	<b>65,3%</b>	<b>100,0%</b>

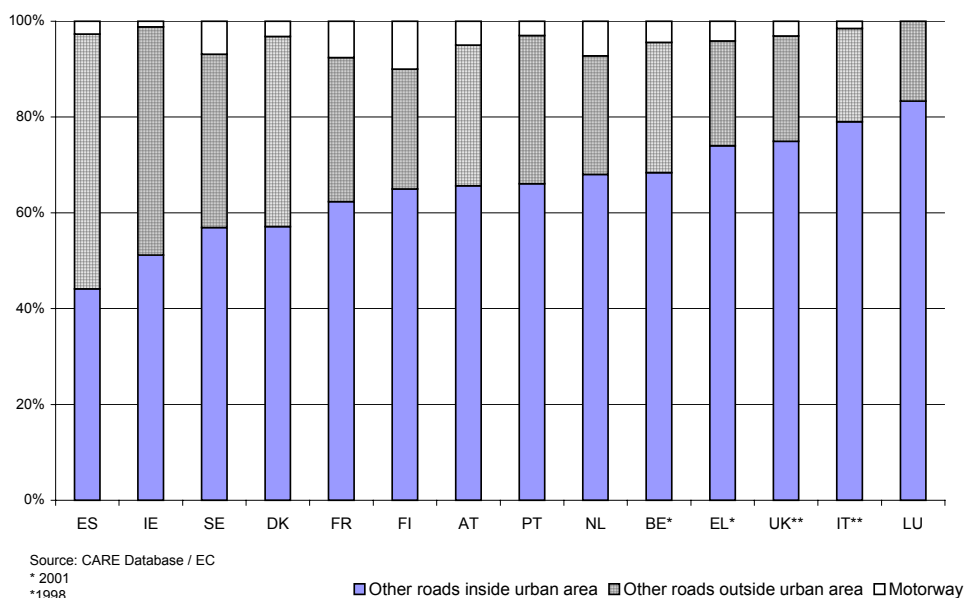
Source: CARE Database / EC

Date of query: October 2004

\* Data 2001

\*\* Data 1998

Figure 14: Number of pedestrian fatalities per country, by road and area type, 2002



**Table: 15** Number of pedestrian fatalities by type of junction per country, 2002

	Not at junction	At junction					Not defined	Total
		crossroad	level crossing	other junction	roundabout	t or y junction		
BE*	125	0	1	31	1	0	0	158
DK	48	12	0	0	0	2	1	63
EL*	-	-	-	-	-	-	338	338
ES	0	52	0	20	6	44	654	776
FR	768	42	1	13	4	37	0	866
IE	0	10	0	1	0	9	66	86
IT**	677	86	0	75	5	0	0	844
LU	4	2	0	0	0	0	0	6
NL	65	15	0	0	1	16	0	97
AT	74	33	4	0	0	2	47	160
PT	284	16	1	0	0	29	3	333
FI	0	0	0	14	0	0	26	40
SE	33	9	0	1	1	12	2	58
UK	405	79	0	61	9	254	0	808

Source: CARE Database / EC  
Date of query: November 2004

\* Data 2001

\*\* Data 1998

## Statistics related to the age of persons

**Table: 16** Annual number of fatalities per country, by age, 2002

	0-9	10-15	16-17	18-20	21-24	25-29	30-39	40-49	50-59	60-64	65-74	75+	Total
BE*	41	30	38	108	173	179	251	202	139	53	132	132	1.486
DK	8	8	24	37	39	49	72	51	52	20	38	65	463
EL*	28	28	42	139	246	210	276	211	183	101	220	165	1.880
ES	83	106	134	371	564	648	965	685	582	226	503	331	5.346
FR	141	147	211	740	904	860	1.190	1.034	746	230	630	731	7.654
IE	11	12	14	33	46	48	55	34	27	16	26	34	378
IT**	74	114	174	396	662	711	906	657	597	347	747	632	6.315
LU	2	1	3	6	4	6	19	11	5	0	3	2	62
NL	12	43	44	95	110	90	144	121	86	28	82	131	987
AT	15	18	35	81	91	74	153	121	107	50	103	108	956
PT	34	38	43	103	166	206	270	230	163	78	173	127	1.655
FI	10	10	13	43	30	23	46	62	61	18	52	47	415
SE	9	18	11	49	51	42	76	62	74	29	43	96	560
UK	78	114	162	361	364	349	604	419	321	123	236	419	3.581
EU-14	546	687	948	2.562	3.450	3.495	5.027	3.900	3.143	1.319	2.988	3.020	31.738
% by age group	1,7%	2,2%	3,0%	8,1%	10,9%	11,0%	15,8%	12,3%	9,9%	4,2%	9,4%	9,5%	100,0%

Source: CARE Database / EC

Date of query: October 2004

\* Data 2001

\*\* Data 1998

## Group of Vehicles by age of persons

**Table: 17** Number of car and taxi driver fatalities per country, by age, 2002

	0 to 15	16 to 24	25 to 64	>64	Total
BE*	0	145	419	96	662
DK	0	33	106	31	170
EL*	1	81	364	61	508
ES	0	357	1.321	222	1.919
FR	0	854	2.020	569	3.483
IE	0	30	76	21	133
IT**	1	464	1.528	350	2.400
LU	0	5	31	2	38
NL	0	106	182	53	341
AT	0	103	216	54	373
PT	0	88	268	43	399
FI	0	41	106	36	183
SE	2	53	156	60	271
UK	3	345	657	189	1.199
<b>Total</b>	<b>7</b>	<b>2.705</b>	<b>7.450</b>	<b>1.787</b>	<b>12.054</b>
<b>% by age group</b>	<b>0,1%</b>	<b>22,4%</b>	<b>61,8%</b>	<b>14,8%</b>	<b>100,0%</b>

Source: CARE Database / EC  
 Date of query: October 2004  
 \* Data 2001  
 \*\* Data 1998

**Table: 18** Number of car and taxi passenger fatalities per country, by age, 2002

	0 to 15	16 to 24	25 to 64	>64	Total
BE*	34	72	93	37	237
DK	6	29	26	15	76
EL*	20	91	132	46	295
ES	92	341	529	189	1.193
FR	146	465	493	267	1.379
IE	7	24	21	9	69
IT**	78	318	473	160	1.114
LU	2	8	4	0	14
NL	10	46	55	27	138
AT	20	47	65	19	151
PT	31	82	135	46	302
FI	7	28	37	12	84
SE	11	30	44	23	108
UK	72	258	176	118	630
<b>Total</b>	<b>536</b>	<b>1.839</b>	<b>2.283</b>	<b>968</b>	<b>5.790</b>
<b>% by age group</b>	<b>9,3%</b>	<b>31,8%</b>	<b>39,4%</b>	<b>16,7%</b>	<b>100,0%</b>

Source: CARE Database / EC  
 Date of query: October 2004  
 \* Data 2001  
 \*\* Data 1998

**Table: 19** Number of moped and motorcycle rider fatalities per country, by age, 2002

	0 to 15	16 to 24	25 to 64	65+	Total
BE*	0	59	127	7	194
DK	1	12	38	8	59
EL*	4	178	202	37	426
ES	23	210	400	44	697
FR	31	387	845	44	1.328
IE	0	19	21	0	40
IT**	38	317	553	152	1.082
LU	0	0	0	0	0
NL	1	46	104	31	182
AT	1	32	81	16	130
PT	1	80	207	33	323
FI	2	9	16	1	28
SE	2	14	24	3	43
UK	3	129	435	23	599
<b>Total</b>	<b>107</b>	<b>1.492</b>	<b>3.053</b>	<b>399</b>	<b>5.131</b>
<b>% by age group</b>	<b>2,1%</b>	<b>29,1%</b>	<b>59,5%</b>	<b>7,8%</b>	<b>100,0%</b>

Source: CARE Database / EC

Date of query: October 2004

\* Data 2001

\*\* Data 1998

**Table: 20** Number of moped and motorcycle passenger fatalities per country, by age, 2002

	0 to 15	16 to 24	25 to 64	65+	Total
BE*	1	9	6	0	16
DK	1	1	1	0	3
EL*	6	32	36	0	77
ES	9	35	25	0	75
FR	12	36	56	6	112
IE	0	2	2	0	4
IT**	11	47	36	3	106
LU	0	0	0	0	0
NL	3	3	3	0	9
AT	1	2	1	1	5
PT	2	13	9	1	25
FI	0	0	0	1	1
SE	3	1	2	0	6
UK	0	13	15	0	29
<b>Total</b>	<b>49</b>	<b>194</b>	<b>192</b>	<b>12</b>	<b>468</b>
<b>% by age group</b>	<b>10,5%</b>	<b>41,5%</b>	<b>41,0%</b>	<b>2,6%</b>	<b>100,0%</b>

Source: CARE Database / EC

Date of query: October 2004

\* Data 2001

\*\* Data 1998

**Table: 21** Number of pedestrian fatalities per country, by age, 2002

	0 to15	16 to 24	25 to 64	65+	Total
BE*	17	10	64	66	158
DK	3	10	27	23	63
EL*	20	12	120	173	338
ES	41	54	339	289	776
FR	64	67	341	383	866
IE	9	10	39	25	86
IT**	41	41	263	468	844
LU	1	0	2	3	6
NL	14	6	35	42	97
AT	8	14	54	84	160
PT	21	10	163	132	333
FI	4	3	19	14	40
SE	4	5	19	30	58
UK	83	106	318	301	808
<b>Total</b>	<b>330</b>	<b>348</b>	<b>1.803</b>	<b>2.033</b>	<b>4.633</b>
<b>% by age group</b>	<b>7,1%</b>	<b>7,5%</b>	<b>38,9%</b>	<b>43,9%</b>	<b>100,0%</b>

Source: CARE Database / EC

Date of query: October 2004

\* Data 2001

\*\* Data 1998

**Table: 22** Number of pedal cyclist fatalities per country, by age, 2002

	0 to15	16 to 24	25 to 64	65+	Total
BE*	14	11	49	54	130
DK	4	3	22	23	52
EL*	3	7	11	8	29
ES	6	8	51	31	97
FR	23	14	106	78	225
IE	4	2	8	3	19
IT**	16	15	138	181	364
LU	0	0	1	0	1
NL	26	27	56	59	169
AT	2	2	48	28	80
PT	7	5	27	14	58
FI	5	0	18	30	53
SE	2	3	17	20	42
UK	26	14	74	22	137
<b>Total</b>	<b>138</b>	<b>111</b>	<b>626</b>	<b>551</b>	<b>1.456</b>
<b>% by age group</b>	<b>9,5%</b>	<b>7,6%</b>	<b>43,0%</b>	<b>37,8%</b>	<b>100,0%</b>

Source: CARE Database / EC

Date of query: October 2004

\* Data 2001

\*\* Data 1998

## Age of persons by group of vehicle

**Table: 23** Number of fatalities aged 0 to 15 per country, by group of vehicle (in which the fatality was travelling), 2002

	agricultural tractor	bus or coach	car or taxi	heavy goods vehicle	lorry, under 3.5 tonnes	motor moped	motor cycle	pedal cycle	other	Total
BE*	0	1	34	2	2	1	0	14	0	54
DK	0	0	6	0	0	2	0	4	0	12
EL*	1	0	21	0	1	0	8	3	0	34
ES	0	0	92	3	14	28	3	4	2	146
FR	1	1	203	2	9	41	5	22	2	286
IE	0	0	15	0	2	0	0	4	1	22
IT**	1	1	79	0 <sup>1</sup>	-	47	2	15	0	145
LU	0	0	2	0 <sup>1</sup>	-	0	0	0	0	2
NL	0	0	10	0	1	3	1	26	0	41
AT	0	0	20	0	0	2	0	2	1	25
PT <sup>2</sup>	0	2	33	0	6	1	3	7	0	52
FI	1	0	7	0	0	2	0	5	1	16
SE	0	2	13	1	0	4	1	2	0	23
UK	0	11	127	3	5	0	6	26	1	179
<b>Total</b>	<b>4</b>	<b>18</b>	<b>662</b>	<b>11</b>	<b>40</b>	<b>131</b>	<b>29</b>	<b>134</b>	<b>8</b>	<b>1.037</b>
<b>% by vehicle group</b>	<b>0,4%</b>	<b>1,7%</b>	<b>63,8%</b>	<b>1,1%</b>	<b>3,9%</b>	<b>12,6%</b>	<b>2,8%</b>	<b>12,9%</b>	<b>0,8%</b>	<b>100,0%</b>

Source: CARE Database / EC

Date of query: October 2004

\* Data 2001

\*\* Data 1998

<sup>1</sup> heavy goods vehicles include lorries < 3,5t

<sup>2</sup> Autonomous Regions (Azores and Madeira Islands) not included



**Table: 24** Number of fatalities aged 16 to 24 per country, by group of vehicle (in which the fatality was travelling), 2002

	agricultural tractor	bus or coach	car or taxi	heavy goods vehicle	lorry, under 3.5 tonnes	moped	motor cycle	pedal cycle	other	Total
BE*	0	1	217	3	7	34	34	11	2	309
DK	0	0	62	0	12	8	5	3	0	90
EL*	11	0	172	2	11	24	186	7	2	415
ES	0	1	697	18	44	168	77	6	2	1.014
FR	0	2	1.373	17	12	188	239	13	5	1.851
IE	0	0	61	0	6	0	21	2	2	92
IT**	1	0	782	24 <sup>1</sup>	-	216	150	14	2	1.165
LU	0	0	13	0 <sup>1</sup>	-	0	0	0	0	13
NL	0	1	152	4	10	42	7	27	0	243
AT	1	0	150	2	3	16	18	2	1	193
PT <sup>2</sup>	2	0	176	1	34	27	78	5	0	324
FI	0	1	69	3	0	3	6	0	1	83
SE	1	0	83	2	1	4	11	3	1	106
UK	0	13	685	16	9	14	128	14	4	883
<b>Total</b>	16	19	4.692	68	149	744	960	107	22	6.781
<b>% by vehicle group</b>	0,2%	0,3%	69,2%	1,0%	2,2%	11,0%	14,2%	1,6%	0,3%	100,0%

Source: CARE Database / EC

Date of query: October 2004

\* Data 2001

\*\* Data 1998

<sup>1</sup> heavy goods vehicles include lorries < 3.5t

<sup>2</sup> Autonomous Regions (Azores and Madeira Islands) not included

**Table: 25** Number of fatalities aged 25 to 64 per country, by group of vehicle (in which the fatality was travelling), 2002

	agricultural tractor	bus or coach	car or taxi	heavy goods vehicle	lorry, under 3.5 tonnes	moped	motor cycle	pedal cycle	other	Total
BE*	0	5	512	23	36	21	112	49	2	760
DK	0	2	132	5	16	22	17	22	1	217
EL*	27	3	496	21	60	34	204	11	4	862
ES	10	9	1.855	138	247	123	306	45	13	2.746
FR	15	14	2.756	143	74	126	792	100	13	4.033
IE	0	2	123	7	13	0	23	8	3	179
IT**	14	8	1.998	172 <sup>1</sup>	-	246	342	133	20	2.761
LU	0	0	35	3 <sup>1</sup>	-	0	0	1	0	36
NL	2	0	237	7	24	23	84	56	1	434
AT	7	3	281	10	16	15	67	48	4	451
PT <sup>2</sup>	19	6	407	16	84	75	136	29	1	777
FI	0	2	143	2	9	0	16	18	1	191
SE	2	0	200	10	7	3	23	17	2	264
UK	2	37	1.043	93	74	4	465	74	10	1.803
<b>Total</b>	<b>98</b>	<b>91</b>	<b>10.218</b>	<b>475</b>	<b>660</b>	<b>692</b>	<b>2.587</b>	<b>611</b>	<b>75</b>	<b>15.514</b>
<b>% by vehicle group</b>	<b>0,6%</b>	<b>0,6%</b>	<b>65,9%</b>	<b>3,1%</b>	<b>4,3%</b>	<b>4,5%</b>	<b>16,7%</b>	<b>3,9%</b>	<b>0,5%</b>	<b>100,0%</b>

Source: CARE Database / EC

Date of query: October 2004

\* Data 2001

\*\* Data 1998

<sup>1</sup> heavy goods vehicles include lorries < 3,5t

<sup>2</sup> Autonomous Regions (Azores and Madeira Islands) not included

**Table: 26** Number of fatalities aged >64 per country, by group of vehicle (in which the fatality was travelling), 2002

	agricultural tractor	bus or coach	car or taxi	heavy goods vehicle	lorry, under 3.5 tonnes	moped	motor cycle	pedal cycle	other	Total
BE*	0	2	133	0	2	6	1	54	0	198
DK	0	2	56	0	1	6	2	23	0	90
EL*	31	1	107	4	21	16	21	8	1	210
ES	5	2	415	0	32	43	1	29	4	534
FR	6	15	1.121	40	14	25	48	75	5	1.349
IE	0	1	41	6	2	0	2	3	4	60
IT**	5	2	510	25 <sup>1</sup>	-	140	13	182	27	879
LU	0	0	2	0 <sup>1</sup>	-	0	0	0	0	2
NL	0	0	80	0	1	30	1	59	0	171
AT	4	2	73	0	0	12	5	28	3	127
PT <sup>2</sup>	9	0	87	1	10	33	5	14	0	165
FI	1	0	48	0	3	2	0	30	1	85
SE	0	3	83	0	0	1	2	20	0	109
UK	1	19	489	40	24	4	31	22	12	642
<b>Total</b>	<b>62</b>	<b>49</b>	<b>3.245</b>	<b>91</b>	<b>110</b>	<b>318</b>	<b>132</b>	<b>547</b>	<b>57</b>	<b>4.621</b>
<b>% by vehicle group</b>	<b>1,3%</b>	<b>1,1%</b>	<b>70,2%</b>	<b>2,0%</b>	<b>2,4%</b>	<b>6,9%</b>	<b>2,9%</b>	<b>11,8%</b>	<b>1,2%</b>	<b>100,0%</b>

Source: CARE Database / EC

Date of query: October 2004

\* Data 2001

\*\* Data 1998

<sup>1</sup> heavy goods vehicles include lorries < 3,5t

<sup>2</sup> Autonomous Regions (Azores and Madeira Islands) not included

## Group of vehicle by type of collision

**Table: 27** Number of car and taxi occupant fatalities per country, by type of collision, 2002

	chain or						single vehicle accidents			not defined	Total
	animal	rear	frontal	lateral	other	parked vehicle	no distinction	no obstacle	with obstacle		
BE*	0	76	163	147	0	0	-	21	492	0	899
DK*	-	-	-	-	-	-	-	-	-	246	246
EL*	2	49	176	189	10	25	-	203	146	0	803
ES	7	241	631	715	57	26	-	820	617	0	3.117
FR	0	208	1.093	745	639	0	2.178	-	-	0	4.863
IE	0	5	81	16	9	0	88	-	-	0	202
IT**	0	279	755	973	1.031	23	-	-	440	0	3.516
LU	0	0	0	0	22	0	-	0	30	0	52
NL	0	25	72	101	0	5	-	31	245	0	479
AT	1	36	145	21	65	2	-	254	0	0	524
PT	1	26	236	104	0	0	-	190	150	0	712
FI	-	-	-	-	-	-	-	-	-	267	267
SE	6	13	128	68	17	0	-	146	1	0	379
UK	-	-	-	-	-	-	-	-	-	1.832	1.832

Source: CARE Database / EC

Date of query: October 2004

\* Data 2001

\*\* Data 1998

**Table: 28** Number of moped rider and passenger fatalities per country, by type of collision, 2002

	chain or						single vehicle accident			not defined	Total
	animal	rear	frontal	lateral	other	parked vehicle	no distinction	no obstacle	with obstacle		
BE*	0	16	6	23	0	0	-	1	16	1	63
DK	-	-	-	-	-	-	-	-	-	38	38
EL*	0	8	11	29	1	2	-	17	8	0	77
ES	1	50	63	139	19	8	-	44	56	0	383
FR	0	31	93	101	61	0	100	-	-	0	386
IE <sup>2</sup>	-	-	-	-	-	-	-	-	-	-	-
IT**	0	64	101	348	110	3	-	0	47	0	674
LU	0	0	0	0	0	0	-	0	0	0	0
NL	1	5	14	55	0	1	-	4	18	0	98
AT	0	5	7	1	23	0	-	9	0	0	45
PT	0	0	7	1	0	0	-	1	5	0	14
FI	-	-	-	-	-	-	-	-	-	7	7
SE	0	3	0	6	1	0	-	2	0	0	12
UK	-	-	-	-	-	-	-	-	-	21	21

Source: CARE Database / EC

Date of query: October 2004

<sup>2</sup> no data available

\* Data 2001

\*\* Data 1998

**Table: 29** Number of motorcycle rider and passenger fatalities per country, by type of collision, 2002

	chain or animal rear frontal lateral other parked vehicle						single vehicle accident			not defined	Total
							no		with		
							distinction	no obstacle			
BE*	0	15	31	50	0	0	-	11	39	0	147
DK	-	-	-	-	-	-	-	-	-	24	24
EL*	2	33	67	144	3	10	-	95	69	0	426
ES	0	36	56	113	13	5	-	98	75	0	402
FR		72	165	267	179	0	381	-	-	0	1.064
IE	0	1	15	9	4	0	14	-	-	0	44
IT**	0	49	91	218	114	3	-	0	36	0	517
LU	0	0	0	0	0	0	-	0	0	0	0
NL	0	10	18	36	0	2	-	5	22	0	93
AT	0	9	20	4	19	0	-	37	0	0	90
PT	1	34	93	86	0	0	-	42	83	0	342
FI	-	-	-	-	-	-	-	-	-	22	22
SE	2	0	7	14	3	0	-	11	0	0	37
UK	-	-	-	-	-	-	-	-	-	607	607

Source: CARE Database / EC

Date of query: October 2004

\* Data 2001

\*\* Data 1998

**Table: 30** Number of pedal cycle rider and passenger fatalities per country, by type of collision, 2002

	chain or animal rear frontal lateral other parked vehicle						single vehicle accidents			not defined	Total
							no		with		
							distinction	obstacle			
BE*	0	21	16	81	0	0	-	6	6	0	130
DK	-	-	-	-	-	-	-	-	-	52	52
EL*	0	9	2	17	0	0	-	1	0	0	29
ES	0	26	5	36	11	0	-	10	6	0	95
FR	0	55	29	59	54	0	26	-	-	0	223
IE	0	5	3	1	8	0	1	-	-	0	18
IT**	0	97	29	203	33	1	-	0	1	0	364
LU	0	0	0	0	1	0	-	0	0	0	1
NL	0	16	5	133	0	0	-	9	5	0	169
AT	0	6	3	7	43	1	-	19	1	0	80
PT	0	21	13	13	0	0	-	6	6	0	59
FI	-	-	-	-	-	-	-	-	-	53	53
SE	0	4	3	19	1		-	14	1	0	42
UK	-	-	-	-	-	-	-	-	-	133	133

Source: CARE Database / EC

Date of query: October 2004

\* Data 2001

\*\* Data 1998

**Table: 31** Number of heavy goods vehicle occupant fatalities per country, by type of collision, 2002

	chain or animal rear frontal lateral other parked vehicle						single vehicle accidents			not defined	Total
							no distinction	no obstacle	with obstacle		
BE*	0	15	0	5	0	0	-	2	6	0	28
DK	-	-	-	-	-	-	-	-	-	5	5
EL*	0	2	1	3	3	0	-	16	3	0	28
ES	0	20	15	18	4	0	-	94	20	0	173
FR	0	15	11	8	16	0	82	-	-	0	132
IE	0	0	1	0	0	0	2	-	-	0	3
IT** <sup>1</sup>	0	43	32	54	93	1	-	0	23	0	249
LU <sup>1</sup>	0	0	0	0	1	1	-	0	1	0	3
NL	0	1	2	2	0	1	-	1	4	0	11
AT	0	3	3	1	0	0	-	5	0	0	12
PT	0	2	3	1	0	0	-	10	1	0	17
FI	-	-	-	-	-	-	-	-	-	5	5
SE	0	1	4	0	0	0	0	8	0	0	13
UK	-	-	-	-	-	-	-	-	-	63	63

Source: CARE Database / EC

Date of query: October 2004

 \* Data 2001 <sup>1</sup>including lorries < 3,5t

\*\* Data 1998

**Table: 32** Number of fatalities among occupant of lorries<3,5t per country, by type of collision, 2002

	chain or animal rear frontal lateral other parked vehicle						single vehicle accidents			not defin ed	Total
							no distinction	no obstacle	with obstacle		
BE*	0	6	7	11	0	0	-	2	22	0	48
DK	-	-	-	-	-	-	-	-	-	29	29
EL*	0	3	23	18	3	2	-	26	19	0	94
ES	0	45	75	81	6	4	-	84	47	0	342
FR	0	5	14	15	13	0	34	-	-	0	81
IE	0	0	6	3	0	0	8	-	-	0	17
IT <sup>2</sup>	0	0	0	0	0	0	-	0	0	0	0
LU <sup>2</sup>	-	-	-	-	-	-	-	-	-	-	-
NL	0	0	3	10	0	0	-	4	19	0	36
AT	0	5	1	0	2	0	-	11	0	0	19
PT	0	9	38	17	0	0	-	38	36	0	139
FI	-	-	-	-	-	-	-	-	-	12	12
SE	0	0	5	1	0	0	-	2	0	0	8
UK	-	-	-	-	-	-	-	-	-	72	72

Source: CARE Database / EC

Date of query: October 2004

\* Data 2001

\*\* Data 1998

<sup>2</sup>no data available

**Table: 33** Number of bus occupant fatalities per country, by type of collision, 2002

							single vehicle accidents			not defined	Total
							no distinction	no obstacle	with obstacle		
	animal	chain or rear	frontal	lateral	other	parked vehicle					
BE*	0	2	1	1	0	0	-	0	5	0	9
DK	-	-	-	-	-	-	-	-	-	4	4
EL*	0	0	0	0	0	0	-	4	0	0	4
ES	0	2	1	5	0	0	-	7	0	0	15
FR	-	-	5	3	-	-	2	-	-	-	10
IE	0	0	0	0	0	0	1	-	-	0	3
IT**	0	1	2	0	8	0	-	0	2	0	13
LU	0	0	0	0	0	0	-	0	0	0	0
NL	0	0	0	0	0	0	-	0	1	0	1
AT	0	4	1	0	0	0	-	0	0	0	5
PT	0	1	0	0	0	0	-	0	7	0	8
FI	-	-	-	-	-	-	-	-	-	3	3
SE	0	0	0	2	0	0	-	3	0	0	5
UK	-	-	-	-	-	-	-	-	-	26	26

Source: CARE Database / EC

Date of query: October 2004

\* Data 2001

\*\* Data 1998

## Various periods of time (month, day of week and hour)

**Table: 34** Number of fatalities per country, by month, 2002

	January	February	March	April	May	June	July	August	September	October	November	December	Total
BE*	118	93	106	109	121	137	153	140	135	124	137	113	1.486
DK	35	16	29	32	40	40	26	49	56	34	58	48	463
EL*	139	155	126	152	139	153	188	200	186	174	152	116	1.880
ES	472	376	430	360	407	472	507	558	436	447	435	449	5.347
FR	626	600	637	609	647	667	699	670	635	704	605	556	7.655
IE	35	33	34	33	20	34	43	35	36	31	23	21	378
IT**	530	431	514	501	618	585	662	618	631	462	337	424	6.314
LU	2	6	1	3	3	7	6	7	6	7	9	5	62
NL	67	79	84	91	75	90	90	88	87	82	84	70	987
AT	64	48	69	60	83	86	98	104	98	93	72	81	956
PT	117	136	171	141	125	121	179	148	141	135	119	122	1.655
FI	36	30	25	26	31	43	37	59	35	26	36	31	415
SE	40	46	42	38	51	69	64	62	34	40	41	33	560
UK	249	243	314	256	284	273	301	320	345	330	314	352	3.581
<b>Total</b>	<b>2.531</b>	<b>2.293</b>	<b>2.582</b>	<b>2.411</b>	<b>2.644</b>	<b>2.777</b>	<b>3.052</b>	<b>3.058</b>	<b>2.861</b>	<b>2.689</b>	<b>2.421</b>	<b>2.420</b>	<b>31.739</b>
<b>% by month</b>	<b>8,0%</b>	<b>7,2%</b>	<b>8,1%</b>	<b>7,6%</b>	<b>8,3%</b>	<b>8,7%</b>	<b>9,6%</b>	<b>9,6%</b>	<b>9,0%</b>	<b>8,5%</b>	<b>7,6%</b>	<b>7,6%</b>	<b>100,0%</b>

Source: CARE Database / EC

Date of query: October 2004

\* Data 2001

\*\* Data 1998



**Table: 35** Number of fatalities per country, by day of week, 2002

	Monday	Tuesday	Wednesday	Thursday	Friday	Saturday	Sunday	Total
BE*	182	182	198	183	223	266	252	1.486
DK	55	54	53	70	75	75	81	463
EL*	237	241	225	231	249	321	376	1.880
ES	681	615	654	622	819	977	979	5.347
FR	912	935	950	968	1.225	1.329	1.335	7.654
IE	57	36	47	52	54	48	84	378
IT	875	807	755	860	873	1.061	1.082	6.313
LU	9	5	9	7	11	16	5	62
NL	126	122	120	132	166	171	150	987
AT	113	117	131	134	134	169	158	956
PT	209	201	190	177	274	262	343	1.656
FI	65	57	63	57	70	52	51	415
SE	71	81	82	79	91	92	64	560
UK	446	457	492	470	611	575	530	3.581
<b>Total</b>	<b>4.038</b>	<b>3.910</b>	<b>3.969</b>	<b>4.042</b>	<b>4.875</b>	<b>5.414</b>	<b>5.490</b>	<b>31.738</b>
<b>% by day</b>	<b>12,7%</b>	<b>12,3%</b>	<b>12,5%</b>	<b>12,7%</b>	<b>15,4%</b>	<b>17,1%</b>	<b>17,3%</b>	<b>100,0%</b>

Source: CARE Database / EC

Date of query: October 2004

\* Data 2001

\*\* Data 1998

**Table: 36** Number of fatalities per country, by hour of day, 2002

	0	1	2	3	4	5	6	7	8	9	10	11	12
BE*	54	68	64	56	44	53	54	57	52	38	68	40	51
DK	9	6	13	12	17	10	21	15	16	12	17	19	26
EL*	47	51	60	66	73	81	78	69	64	64	64	78	72
ES	157	173	141	120	121	160	217	267	240	204	182	202	227
FR	201	192	185	160	200	255	266	322	319	294	271	327	329
IE	34	21	19	23	13	4	5	11	14	12	13	9	10
IT**	162	247	229	178	195	160	140	213	218	301	257	261	258
LU	5	2	3	3	4	0	3	2	3	1	1	0	1
NL	32	23	34	21	15	25	39	50	31	30	31	33	43
AT	24	25	32	25	31	35	48	60	29	34	33	43	28
PT	66	51	35	41	36	36	65	65	91	52	46	62	49
FI	15	12	5	13	9	6	10	12	18	24	15	20	17
SE	17	12	15	14	16	10	15	22	16	25	26	27	30
UK	125	99	93	62	43	57	97	141	124	108	128	144	177
<b>Total</b>	<b>948</b>	<b>982</b>	<b>928</b>	<b>794</b>	<b>817</b>	<b>892</b>	<b>1.058</b>	<b>1.306</b>	<b>1.235</b>	<b>1.199</b>	<b>1.152</b>	<b>1.265</b>	<b>1.318</b>
<b>% by hour</b>	<b>3,0%</b>	<b>3,1%</b>	<b>2,9%</b>	<b>2,5%</b>	<b>2,6%</b>	<b>2,8%</b>	<b>3,3%</b>	<b>4,1%</b>	<b>3,9%</b>	<b>3,8%</b>	<b>3,6%</b>	<b>4,0%</b>	<b>4,2%</b>

	13	14	15	16	17	18	19	20	21	22	23	Total
BE*	59	60	61	85	83	90	89	74	54	69	59	1.486
DK	38	25	34	29	31	29	13	15	16	20	20	463
EL*	74	111	96	99	98	108	91	81	86	87	82	1.880
ES	250	287	233	255	266	286	345	310	269	213	221	5.346
FR	277	381	428	472	523	524	437	456	296	288	254	7.657
IE	8	18	15	19	22	20	22	19	18	20	9	378
IT**	287	299	317	359	344	409	381	301	250	212	230	6.318
LU	3	4	6	2	4	3	3	2	2	3	2	62
NL	38	65	87	68	75	56	49	31	33	36	42	987
AT	43	51	42	52	66	62	63	33	30	30	37	956
PT	64	57	81	70	96	117	135	105	89	67	74	1.655
FI	27	30	21	24	30	16	22	18	15	18	18	415
SE	28	20	46	52	32	26	28	25	13	15	15	560
UK	181	158	211	236	231	215	221	180	189	170	191	3.581
<b>Total</b>	<b>1.377</b>	<b>1.566</b>	<b>1.678</b>	<b>1.822</b>	<b>1.901</b>	<b>1.961</b>	<b>1.899</b>	<b>1.650</b>	<b>1.360</b>	<b>1.248</b>	<b>1.254</b>	<b>31.744</b>
<b>% by hour</b>	<b>4,3%</b>	<b>4,9%</b>	<b>5,3%</b>	<b>5,7%</b>	<b>6,0%</b>	<b>6,2%</b>	<b>6,0%</b>	<b>5,2%</b>	<b>4,3%</b>	<b>3,9%</b>	<b>4,0%</b>	<b>100,0%</b>

Source: CARE Database / EC

Date of query: October 2004

\* Data 2001

\*\* Data 1998

## Group of vehicle by type of area

**Table: 37** Number of fatalities per country, by vehicle (in which the fatality was travelling) and area type, 2002

	agricultural tractor		bus or coach		car or taxi		heavy goods vehicle		lorry, under 3.5 tonnes	
	inside urban area	outside urban area	inside urban area	outside urban area	inside urban area	outside urban area	inside urban area	outside urban area	inside urban area	outside urban area
BE*	0	0	2	7	200	699	2	26	13	35
DK	0	0	0	4	38	208	1	4	3	26
EL*	19	53	0	4	207	596	6	22	17	77
ES	2	14	1	14	242	2.875	3	169	19	322
FR	7	17	21	13	1.187	4.321	70	146	39	78
IE	0	0	1	2	54	202	11	2	6	19
IT**	6	16	9	4	1.109	2.406	56 <sup>1</sup>	193 <sup>1</sup>	-	-
LU	0	0	0	0	15	25	0 <sup>1</sup>	3 <sup>1</sup>	-	-
NL	1	1	0	1	97	382	3	8	4	32
AT	3	9	0	5	72	452	0	12	2	17
PT	16	14	7	1	171	542	3	15	42	97
FI	0	2	1	2	38	229	0	5	0	12
SE	0	3	1	4	68	311	1	12	1	7
UK	0	1	13	13	480	1.352	5	58	12	60
<b>Total</b>	<b>54</b>	<b>130</b>	<b>56</b>	<b>74</b>	<b>3.978</b>	<b>14.600</b>	<b>105</b>	<b>479</b>	<b>158</b>	<b>782</b>
<b>% by area</b>	<b>29,3%</b>	<b>70,7%</b>	<b>43,1%</b>	<b>56,9%</b>	<b>21,4%</b>	<b>78,6%</b>	<b>18,0%</b>	<b>82,0%</b>	<b>16,8%</b>	<b>83,2%</b>

	moped		motorcycle		other		pedal cycle		Total
	inside urban area	outside urban area	inside urban area	outside urban area	inside urban area	outside urban area	inside urban area	outside urban area	
BE*	26	37	46	101	3	1	53	77	1.328
DK	18	20	6	18	0	1	24	28	399
EL*	47	30	264	162	0	7	19	10	1.540
ES	173	210	108	293	0	23	18	78	4.564
FR	194	204	443	661	13	14	79	146	7.653
IE	-	-	14 <sup>2</sup>	33 <sup>2</sup>	5	6	9	10	327
IT**	453	222	249	267	14	49	221	143	5.168
LU	0	0	0	0	0	0	0	1	41
NL	51	47	27	66	1	0	98	71	890
AT	19	26	22	68	2	7	40	40	796
PT	11	2	186	157	1	0	29	29	1.323
FI	2	5	6	16	2	2	30	23	375
SE	4	8	10	27	1	2	27	15	502
UK	10	11	238 <sup>2</sup>	369 <sup>2</sup>	4	13	72	61	2.165
<b>Total</b>	<b>1.008</b>	<b>822</b>	<b>1.367</b>	<b>1.836</b>	<b>46</b>	<b>125</b>	<b>719</b>	<b>732</b>	<b>27.071</b>
<b>% by area</b>	<b>55,1%</b>	<b>44,9%</b>	<b>42,7%</b>	<b>57,3%</b>	<b>26,9%</b>	<b>73,1%</b>	<b>49,6%</b>	<b>50,4%</b>	

Source: CARE Database / EC

Date of query: November 2004

\* Data 2001

\*\* Data 1998

<sup>1</sup> heavy goods vehicles include lorries < 3,5t

<sup>2</sup> motorcycles including mopeds

## Fatal accidents

### Weather conditions

**Table: 38** Number of fatal accidents per country, by weather conditions, 2002

	dry	fog or mist	other	rain	snow, sleet, hail	strong wind	Total
BE*	1.090	10	9	230	16	4	1.378
DK	339	9		57		6	415
EL*	1.441	9	38	154	6	21	1.669
ES	3.312	73	74	543	10	19	4.031
FR	5.406	99	69	926	9	40	6.549
IE	232	12	8	81		3	346
IT**	4.166	66	506	541	14	11	5.304
LU	21			14			52
NL	770	9		117	1	5	913
AT	708	9		132	22	2	873
PT	1.036	17		248	1	2	1.307
FI	308	2		13	24		367
SE	411	10		33	23		490
UK	2.695	43	43	447	1	0	3.229
<b>Total</b>	<b>21.935</b>	<b>368</b>	<b>747</b>	<b>3.536</b>	<b>127</b>	<b>113</b>	<b>26.923</b>
<b>% by wheather</b>	<b>81,5%</b>	<b>1,4%</b>	<b>2,8%</b>	<b>13,1%</b>	<b>0,5%</b>	<b>0,4%</b>	<b>100,0%</b>

Source: CARE Database / EC

Date of query: October 2004

\* Data 2001

\*\* Data 1998

## Type of junction

**Table: 39** Number of fatal accidents per country, by type of junction, 2002

	Not at junction	At junction					Not defined	Total
		crossroad	level crossing	other junction	roundabout	t or y junction		
BE*	1.036	0	2	330	10	0	0	1.378
DK	295	63	2	6	1	43	5	415
EL*	-	-	-	-	-	-	1.669	1.669
ES	0	233	0	80	47	203	3.468	4.031
FR	5.457	511	20	108	42	411	0	6.549
IE	0	19	0	2	2	44	279	346
IT**	4.133	629	3	495	44	0	0	5.304
LU	45	5	0	0	0	2	0	52
NL	600	165	13	0	11	120	4	913
AT	479	111	15	0	3	27	238	873
PT	1.133	59	13	0	5	82	15	1.307
FI	0	6	0	83	0	0	278	367
SE	328	57	6	8	5	82	4	490
UK	2.051	209	0	240	61	699	0	3.260

Source: CARE Database / EC  
 Date of query: November 2004  
 \* Data 2001  
 \*\* Data 1998

## Type of collision

**Table: 40** Number of fatal accidents per country, by type of collision, 2002

							single vehicle accidents			not defined	Total
	chain		frontal	lateral	other	parked vehicle	no		with obstacle		
	animal	or rear					distinction	no obstacle			
BE*	0	144	199	300	0	0	-	43	542	2	1.378
DK	-	-	-	-	-	-	-	-	-	415	415
EL*	4	103	216	366	22	34	-	393	217	0	1.669
ES	9	317	595	766	88	35	-	947	664	0	4.031
FR	0	351	1.127	1.013	837	0	3.221	-	-	0	6.549
IE	0	11	98	25	21	0	105	-	-	1	346
IT**	0	482	792	1.548	1.223	29	-	0	463	0	5.304
LU	0	0	0	0	17	1	-	0	28	0	52
NL	1	51	100	327	0	14	-	52	280	0	913
AT	1	54	148	32	144	3	-	331	1	0	873
PT	2	73	287	178	0	0	-	255	227	0	1.307
FI	-	-	-	-	-	-	-	-	-	367	367
SE	8	16	111	99	19	0	-	179	2	0	490
UK	-	-	-	-	-	-	-	-	-	3.260	3.260

Source: CARE Database / EC  
 Date of query: August 2004  
 \* Data 2001  
 \*\* Data 1998

## Type of area

**Table: 41** Number of fatal accidents per country, by road and area type, 2002

	Motorways	Not on motorways		Total
		Outside urban area	Inside urban area	
BE*	176	780	422	1.378
DK	39	258	118	415
EL*	78	821	770	1.669
ES	241	3.137	653	4.031
FR	418	4.289	1.842	6.549
IE	3	245	98	346
IT**	557	2.296	2.451	5.304
LU	8	27	17	52
NL	105	472	336	913
AT	102	514	257	873
PT	95	651	561	1.307
FI	15	254	98	367
SE	24	324	142	490
UK	178	1.732	1.350	3.260
<b>Total</b>	<b>2.039</b>	<b>15.800</b>	<b>9.115</b>	<b>26.954</b>
<b>% by road type</b>	<b>7,6%</b>	<b>58,6%</b>	<b>33,8%</b>	<b>100,0%</b>

Source: CARE Database / EC  
Date of query: October 2004

\* Data 2001

\*\* Data 1998

## GLOSSARY

The glossary provides short definitions for variables used in the Annual Statistical Report, and includes short definitions of CARE common values.

The CARE PLUS glossary has been derived from CARE PLUS definition grids which contain detailed information on each common value for each Member State.

The glossary has two components:

- a) A definition of the common value
- b) The availability of the common value in the data file for each Member State.

## Accident

### ACCIDENT

Definition: Occurs on a public road. Occurs on a private road to which the public has right of access (except BE, NL, PT). Involves at least one moving vehicle (except GB, NI, PT). Involves at least one injured or killed person. Is reported by the police. Self reporting possible (BE, GB, GR, IT, IE, NI). Self reporting not possible (DE, DK, FI, NL, AT, PT). Confirmed suicides excluded (BE, DE, GB, IE, NI, NL, AT, PT). Confirmed suicides included (DK, ES, IT, LU).

Note: The variation in the groups of road and the coverage of the injury categories included in injury accidents, together with differences in the level of self reported accidents, will lead to significant variations in the number of injury accidents reported, and their reporting rate, between Member States

## TIME

### MONTH

Definition: Calendar month.

Data availability: All countries (except DE)

### HOUR

Definition: Period of 60 minutes. Rounded down to whole hours (except EL, ES, IT : rounded to nearest hour).

Note: Winter time is:

- GMT from November to March (D from 1996 onwards, GB, IE, NI, PT)
- GMT +1 hour from October to March (BE, DE, AT prior to 1996, DK, ES, FR, IT, LU, NL, SE)
- GMT +2 hours from October to March (EL, FI).

Summer time is one hour ahead of winter time :

- GMT +1 hour from April to October (DE from 1996 onwards, GB, IE, NI, PT)
- GMT +2 hours from April to September (BE, DE, AT prior to 1996, DK, ES, FR, IT, LU, NL, SE)
- GMT +3 hours from April to September (EL, FI).

Data availability: For P, unknown hour coded as '12' during daytime and '0' during night time  
All countries (except DE).

### DAY OF WEEK

Definition: 24 hour day within 7 day week.

Note: Data calculated by the CARE system from the date of accident, where data is not available in national files (AT from 1992 onwards, BE, FR prior to 1993, PT, SE).

Data availability: All countries.



## Person Class

### DRIVER

Definition: Person driving or riding any motorised vehicle or pedal cycle. Person herding animals is not a driver (except BE, AT). Learner driver is a driver (except ES, PT). Learner driver is a driver during a driving test, but not in a driving lesson (DK). Driving instructor is not a driver (except ES, PT). Driving instructor is a driver during a driving lesson, but not during a driving test (DK).

Note: Uninjured drivers are included in the database (except GB, NI, NL : implicitly included in vehicle records only). Data on driving instructors and learner drivers collected separately from 1993 onwards (SE).

Data availability: All countries.

### PASSENGER

Definition: Person on or in a vehicle, who is not the driver. Includes person in the act of boarding or alighting from a vehicle (except DK). Learner driver is not a passenger (except ES, PT). Learner driver is a passenger during a driving lesson, but not during a driving test (DK). Driving instructor is a passenger (except ES, PT). Driving instructor is a passenger during a driving test, but not in a driving lesson (DK).

Note: Uninjured passengers not included in the database (except FR, IE, LU ; ES, FI, AT in some cases).

Data availability: All countries.

### PEDESTRIAN

Definition: Person on foot. Person pushing or holding bicycle (except DE). Person pushing a pram or pushchair. Person leading or herding an animal (except DE, AT). Person riding a toy cycle on the footway (except AT). Person on roller skates, skateboard or skis (except AT). Does not include person in the act of boarding or alighting from a vehicle (except DK, ES).

Note: Uninjured pedestrians not included in the database (except BE, IE, LU ; NL implicitly included in element records; DE, DK, FR, FIN, AT, SE if they caused the accident ; ES not consistently).

Data availability: All countries.

## Type of injury

### INJURED

Definition: Injured in a road accident. Hospitalisation or medical treatment not necessarily required (except FR). Self declaration of injury (DE if slight ; FI, GB, IE, IT, NI). Opinion of the police.

Data availability: All countries.

## FATALITIES

Definition: Death within 30 days of a road accident (UN/ECE Geneva 1995 – Statistics of Road Traffic Accidents in Europe and North America, annex 1), except EL (24 hours), ES (24 hours in CARE ; 24 hours before 1993 in publication), FR (6 days), IT (7 days), AT (3 days before 1992), PT (24 hours). Suicide not included (except DK, ES, FR). Natural death not included (except LU, SE).

Data availability: All countries.

## CASUALTIES

Definition: Injured in a road accident plus fatalities.

Note: see “Fatalities”, “Injured” definitions

Data availability: All countries.

## Gender

### FEMALE

Definition: Determined by the police (except ES, IT, LU, AT, PT : on the basis of identity documents; DK, FI, SE : on the basis of personal id number).

Data availability: All countries.

### MALE

Definition: Determined by the police (except ES, IT, LU, AT, PT : on the basis of identity documents; DK, FI, SE : on the basis of personal id number).

Data availability: All countries.

### UNKNOWN SEX

Definition: Sex could not be determined (hit and run accident , police unable to trace person, not specified).

Data availability: All countries (except F before 1993).

## AGE

### AGE

Definition: Length of life of person. Rounded down to whole number of years (except EL, IT, NI : rounded to nearest year).

Note: Age 0 to 1 is exceptionally rounded up (FR, IT, IE, LU, NI, PT). Age over 99 only available for ES, FR (1993 on), NL.

Data availability: All countries (except DE).

## PASSENGER SEAT

## FRONT PASSENGER

Definition: Person in the front of a vehicle and who is not a driver. Can be more than one front passenger. Seating immediately prior to the accident (DK, GB, IE, LU, NI). Collected mainly for car passengers (GB, NI).

Data availability: All countries (except DE, EL, FI, NL, AT, PT)

## REAR PASSENGER

Definition: Person in the rear of a vehicle. Seating immediately prior to the accident (DK, GB, IE, LU, NI). Collected mainly for car passengers (GB, NI).

Data availability: All countries (except DE, EL, FI, NL, AT, PT)

## AREA TYPE

### INSIDE URBAN AREA

Definition: Area inside urban area boundary signs (except IE, UK). Includes dual carriageways and national roads. Can include motorways (except DE, DK, EL, IT). Opinion of the police (DK, SE).

Note: Data approximated from speed limit of 40 mph or less (IE, UK).

Data availability: All countries.

### OUTSIDE URBAN AREA

Definition: Area outside urban area boundary signs. Opinion of the police (DK, SE). Includes motorways.

Note: Data approximated from speed limit of over 40 mph (IE, UK).

Data availability: All countries.

### MOTORWAY

Definition: Public road with dual carriageways, and at least two lanes each way. Entrance and exit signposted. Road with grade separated interchanges. Road with a central barrier or central reservation. No crossing permitted. No stopping permitted unless in an emergency. Entry prohibited for pedestrians, animals, pedal cycles, mopeds, agricultural vehicles ; learner drivers (BE, EL, IE, PT, UK). Access restricted to motor vehicles (DK, FI, AT). Minimum speed between 50 km/h and 80 km/h (except FR, UK). Maximum speed between 100 km/h and 130 km/h (except DE recommended 130 km/h).

Data availability: All countries.

## VEHICLE GROUP

### AGRICULTURAL TRACTOR

Definition: Motor vehicle for agricultural use, with wheels or caterpillar tracks, with at least two axles. Driving licence required (DK, EL, ES, FI, GB, IT, IE, LU, AT; not in FR). Maximum speed 30 km/h or 40 km/h.

Data availability: All countries (except DK, AT prior to 1997, FR, GB, IE from 1996 onwards, LU).

Value included in another value: agricultural machine (FR), construction or agricultural machine (DK, AT prior to 1997), agricultural or industrial tractor (LU), other motor vehicle (GB), other (IE from 1996 onwards).

### BUS, MORE THAN 16 SEATS

Definition: Motor vehicle with at least four wheels, used for transporting people. Public or private use. Type D driving licence required (B, GB, IRL, NI). Seating for more than 16 passengers (GB, NI).

Data availability: B, GB, IRL from 1996 onwards, NI.

Value included in another value: bus, more than 8 seats (DE, DK, EL, ES, FR, FI, IE, IT, prior to 1996, LU, NL, AT, PT, SE).

### BUS, MORE THAN 8 SEATS

Definition: Motor vehicle with at least four wheels, used for transporting people. Public or private use. Type D driving licence required. Seating for more than 8 passengers. Includes minibus, trolley-bus (except LU), scheduled bus, unscheduled bus, school bus.

Data availability: All countries.

### CAR OR TAXI

Definition: Includes car, taxi. Motor vehicle with four wheels. Used to transport only or mainly people. Seating for no more than 8 passengers. Type B driving licence required. Includes taxi-bus (NL).

Data availability: All countries.

### HEAVY GOODS VEHICLE

Definition: Motor vehicle with at least four wheels, with a permissible gross vehicle weight of over 3.5 tonnes, used only for the transport of goods. With or without a trailer. Type C driving licence required. Includes lorry, over 3.5 tonnes ; road tractor ; road tractor with semi-trailer ; lorry with trailer ; tanker (except FI).

Note: Lorries cannot systematically be categorised as over 3.5 tonnes (DE, IT).

Data availability: All countries (except D, I).

## LORRY, LESS THAN 3.5 TONNES

Definition: Motor vehicle with a permissible gross vehicle weight of less than 3.5 tonnes, used only for the transport of goods. Type B driving licence required.

Note: Lorries cannot systematically be categorised as less than 3.5 tonnes (DE, IT).

Data availability: All countries (except DE, IT, LU).

## MOPED

Definition: Motor vehicle with two wheels, with an engine size of less than 50 cc. Design speed between 25 km/h and 50 km/h. One or two seats. Minimum age for driver between 14 and 18 (except I). No driving licence required (ES, FR, FI, GB, IT, PT, SE). Unregistered vehicle (BE, DE, DK, ES, FR, SE).

Data availability: All countries (except IRL from 1996 onwards).

Value included in another value: two wheeled motor vehicle (IE from 1996 onwards).

## MOTOR CYCLE

Definition: Motor vehicle with two or three wheels (not three wheeled in DE), with an engine size of more than 50 cc. With a trailer possible (except DK). With a sidecar possible. Registered vehicle (except PT). Type A driving licence required. Includes motor scooter (except FR).

Data availability: All countries (except IE from 1996 onwards).

Value included in another value: two wheeled motor vehicle (IE from 1996 onwards).

## OTHER VEHICLE

Definition: Includes other non-motor vehicle, other motor vehicle.

Data availability: ES, FR, GB, IE, LU, NI, AT, PT.

## PEDAL CYCLE

Definition: Vehicle with at least two wheels, without engine, moved by pedals or hand cranks. With or without a trailer. With or without passengers. Ridden in the carriageway. Ridden on the pavement (except DK, LU).

Data availability: All countries.

## COLLISSION TYPE

### COLLISSION WITH ANIMAL

Definition: Collision between vehicle and animal.

Data availability: All countries (except DE, GB, IT, NI).

### CHAIN OR REAR COLLISION

Definition: Collision between two or more vehicles travelling in the same direction on the same road. First vehicle has a rear collision point, other vehicle has a frontal collision point (ES, FR, GR, IE, IT, NL, PT).

Data availability: All countries (except DE, GB, LU, NI).

### FRONTAL COLLISION

Definition: Collision between two vehicles travelling in the opposite direction on the same road. Both vehicles have a frontal collision point (BE, EL, ES, FR, IT, IE, NL, PT).

Data availability: All countries (except GB, LU, NI).

### LATERAL COLLISION

Definition: Includes angle collision, side by side collision. First vehicle has a side collision point, other vehicle has a frontal or side collision point (BE, EL, ES, FR, IT, IE, NL, PT).

Data availability: All countries (except GB, LU, NI).

### COLLISSION WITH PARKED VEHICLE

Definition: Collision between moving vehicle and parked vehicle. Includes vehicle moving off (DE).

Data availability: All countries (except BE, GB, NI, PT).

### COLLISSION WITH PEDESTRIAN

Definition: Collision between moving vehicle and pedestrian.

Data availability: All countries (except GB, NI).

### SINGLE VEHICLE ACCIDENT, NO OBSTACLE

Definition: Accident in which only one vehicle was involved. Includes vehicle leaving the road, cyclist falling.

Data availability: All countries (except FI, GB, IT, LU, NI, SE).

### COLLISSION WITH OBSTACLE

Definition: Collision between moving vehicle and obstacle. On or off the road. Fixed or moving obstacle. Includes trees, posts, crash barriers.

Data availability: All countries (except GB, NI).

## JUNCTION TYPE

### JUNCTION

Definition: Road intersection with three or more arms. Not grade separated. Includes T junction, Y junction, crossroad, level crossing (except DK, FI, GB, NI), roundabout (except FR), multiple junction.

Data availability: All countries (except EL).

### CROSSROAD

Definition: Road intersection with four arms. Opinion of the police (DE, DK, ES, FI ; not AT).

Data availability: All countries (except B, EL).

### NOT AT A JUNCTION

Definition: Position on road more than 20m from a junction or roundabout (GB, IE, NI, NL, AT).  
Position on road more than 50m from a junction (FR). Opinion of the police (BE, DE, DK, ES, FI, IT, LU, SE).

Data availability: All countries (except EL).

### ROUNDAABOUT

Definition: Circular highway. Includes sections of the road leading into it, within 20m (GB, IE, NI, AT). Opinion of the police (DK, ES, FR, IT).

Data availability: All countries (except BE, DE, EL, FI, LU, PT).

### T OR Y JUNCTION

Definition: Road intersection with three arms. Includes T junction, Y junction, staggered junction.

Data availability: All countries (except BE, EL, FIN, IT, PT).